

# **AHD SERIES**

# **Digital Video Recorder**

## **Quick Installation Guide**

Version: 2.3



2016/2/5

# WARNING, CAUTION & COPYRIGHT

## WARNING

Reduce the risk of fire or electric shock. And do not expose this product to rain.

Do not insert any metallic object through the ventilation grills.

CAUTION	
	
<p>1. The lightning flash with arrowhead symbol, within an equilateral triangle, is intended to alert the user on the presence of insinuated “dangerous voltage” within the products enclosure that may be of sufficient magnitude to constitute a risk of electric shock to persons.</p> <p>2. Areas of High Lightning Strike regions must take note to install a lightning protection device in order to prevent hardware failure or burnout of the KA- series embedded DVR.</p>	<p>The exclamation point within an equilateral rhombus is intended to alert the user on the presence of important operating and maintenance (servicing) instruction in the literature accompanying the product.</p>
RISK OF ELECTRIC SHOCK DO NOT OPEN	
<p>TO REDUCE THE RISK OF ELECTRIC SHOCK DO NOT REMOVE COVER (OR BACK). NO USER-SERVICEABLE PARTS INSIDE REFER SERVICING TO QUALIFIED SERVICE</p>	

**USER OF THE SYSTEM ARE RESPONSIBLE FOR CHECKING AND COMPLYING WITH ALL FEDERAL, STATE, AND LOCAL LAWS AND STATUTES COIPCERNING. THE MONITORING AND RECORDING OF VIDEO AND AUDIO SIGNAL. ULTRAK SHALL NOT BE HELD RESPONSIBLE FOR THE USE OF THIS SYSTEM IN VIOLATION OF CURRENT LAWS AND STATUTES.**

- 1) The apparatus should not be exposed to dripping or splashing water and that no objects filled with liquids, such as vases, should be placed on the apparatus.
- 2) **CAUTION - Danger of explosion if battery is incorrectly replaced.**  
Replace only with the same or equivalent type.
- 3) The apparatus with **CLASS I** construction shall be connected to a **MAINS** socket outlet with a protective earth connection.
- 4) The batteries installed should not be exposed to excessive heat such as sunshine, fire or the like.
- 5) The plug or appliance coupler shall remain readily operable for the purpose of disconnection from the mains

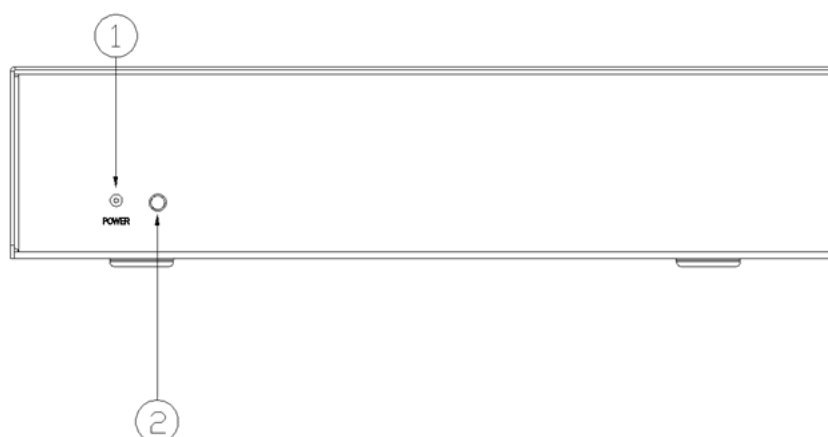
## Contents :

<b>1. PANELS INTRODUCTION .....</b>	<b>5</b>
1.1 STANDARD 4 CH FRONT PANE .....	5
1.2 STANDARD 8 CH FRONT PANEL .....	5
1.3 STANDARD 16 CH FRONT PANEL .....	6
1.4 FUNCTION CONTROL ILLUSTRATION .....	7
1.5. STANDARD 4 CH REAR PANEL .....	9
1.6. STANDARD 8 CH REAR PANEL .....	10
1.7 STANDARD 16 CH REAR PANEL .....	11
<b>2. MONITOR DISPLAY ILLUSTRATION.....</b>	<b>12</b>
2.1 MONTOR Mode.....	12
2.2 PLAYBACK Mode.....	13
2.3 MENU SETTING Mode .....	14
2.4 SETUP SETTING Mode .....	15
2.5 SEARCH Mode .....	16
2.6 Mouse Control Illustration .....	17
<b>3. INTERFACE.....</b>	<b>18</b>
3.1 Image Input and Output.....	18
3.2 Audio Input and Output .....	18
3.3 USB Connector.....	19
3.4 PTZ Device:.....	19
3.5 Alarm IN and OUT : .....	20
3.6 RS-485:.....	20
<b>4. NETWORK: .....</b>	<b>21</b>
4.1 The general settings .....	21
4.2 3G Dongle .....	23
4.3 DDNS Application.....	24
4.4 NAS : .....	27
4.5 E-Mail Setup:.....	27
4.6 FTP Setup: .....	29
4.7 Advanced Network Setup: .....	30
4.8 DVR QR CODE features : .....	31
4.9 Push Alarm Notification settings : .....	33
<b>5 FACTORY DEFAULT: .....</b>	<b>36</b>
<b>6 AHD 1080P UTC OPERATING INSTRUCTIONS.....</b>	<b>37</b>
6.1 Device requirement : .....	37
6.2 Set up : .....	37

<b>7</b>	<b>DVR QUICK SETUP GUIDE:</b>	<b>40</b>
7.1	How to quickly set the USER Account function:	40
7.2	How to quickly set the HDD function:	40
7.3	How to quickly set the SYSTEM Information function:	41
7.4	How to quickly set the VGA Display function:	41
7.5	How to set the IP CAMERA function:	42
7.6	How to quickly set the RECORD function:	43
7.7	How to set the MOTION function:	44
7.8	How to set the Back Up function:	46
<b>8.</b>	<b>USB / DVD PLAYBACK</b>	<b>48</b>
<b>9.</b>	<b>REMOTE VIEW</b>	<b>49</b>
<b>10.</b>	<b>SUPPORT GPS / POS</b>	<b>53</b>
<b>13.</b>	<b>SUPPORT HARDWARE LIST</b>	<b>55</b>
<b>11.</b>	<b>SUPPORT USB FLASH AND DVD LIST</b>	<b>56</b>
<b>12.</b>	<b>PDA / MOBILE PHONE REMOTE ACCESS</b>	<b>57</b>
<b>13.</b>	<b>FIREFOX BROWSER REMOTE ACCESS</b>	<b>58</b>
<b>14.</b>	<b>GUARDCMS INSTALLATION GUIDE FOR IPAD / IPHONE</b>	<b>59</b>
14.1	GuardCMS Install	59
14.2	GuardCMS User manual	61

# 1. Panels Introduction

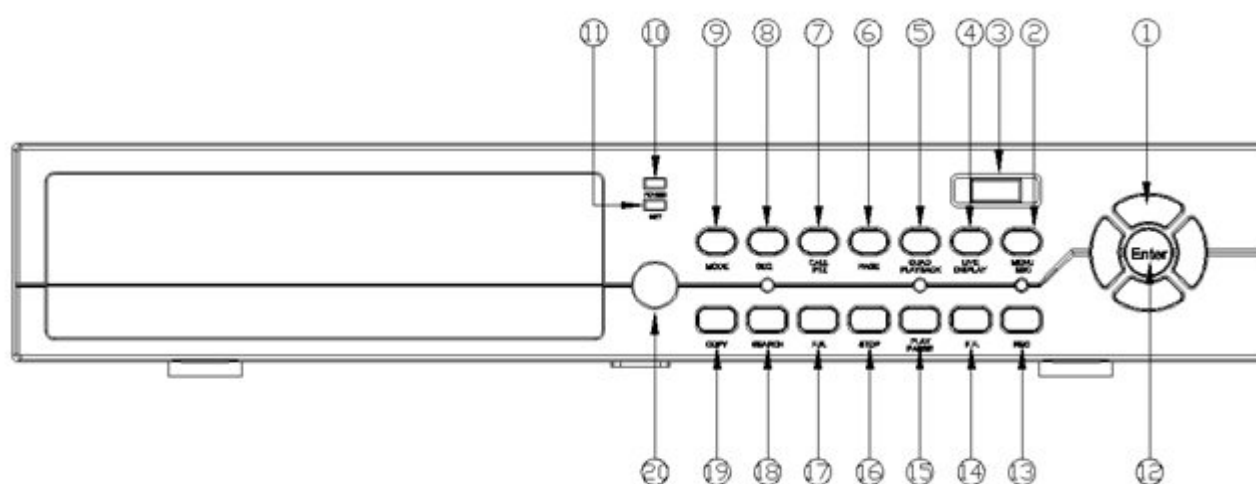
## 1.1 Standard 4 CH Front Pane



### Function Interface

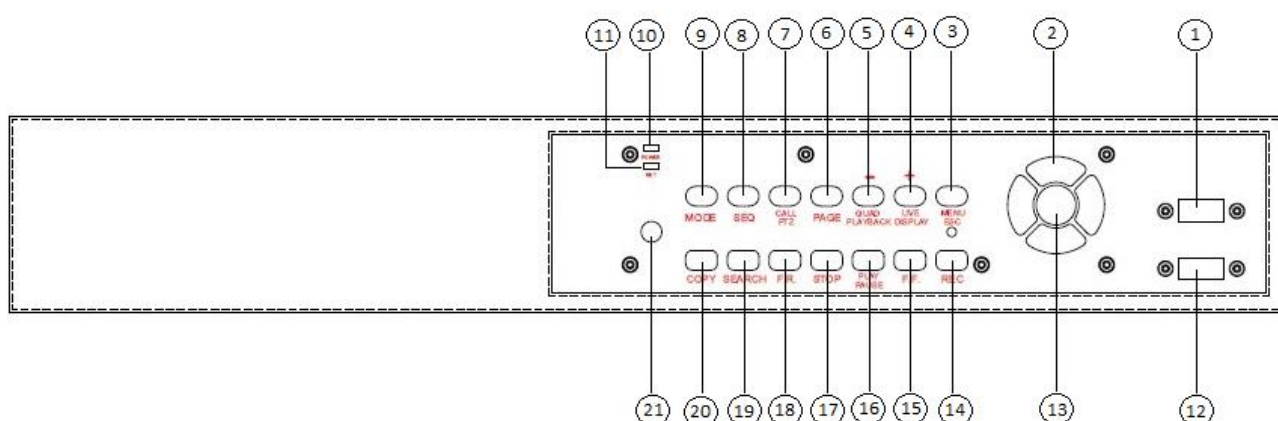
1	Power LED	2	IR Receiver		

## 1.2 Standard 8 CH Front Panel



Function Interface					
1	Direction Control	8	SEQ	15	Play / Pause
2	MENU /ESC	9	Mode	16	Stop
3	USB	10	Power LED	17	Fast Rewind
4	+/LIVE Display	11	Network LED	18	Search
5	-/QUAD Playback	12	ENTER	19	Copy
6	Page	13	Rec	20	IR Receiver
7	Call/PTZ	14	Fast Forward		

### 1.3 Standard 16 CH Front Panel



Function Interface					
1	USB	8	SEQ	15	Fast Forward
2	Direction Control	9	Mode	16	Play / Pause
3	MENU /ESC	10	Power LED	17	Stop
4	+/LIVE Display	11	Network LED	18	Fast Rewind
5	-/QUAD Playback	12	USB	19	Search
6	Page	13	ENTER	20	Copy
7	Call/PTZ	14	Rec	21	IR Receiver

---

## 1.4 Function Control Illustration

This chapter will explain how to use the function buttons at the front panel. Please follow the illustration items as below:

### **MENU/ESC Button:**

In the MONITOR mode, press the MENU/ESC button to bring out the MENU Setting Box. The “SETTING” mode offers 10 kinds of sub-mode. Please select the sub-mode through the “Direction Control” button. The default selection is “Log In/Out”.

In the SETTING mode, the button function will change to ESC function. If you press the button in the “SETTING” mode, the display will go back to the Live Display mode. The DVR will save all modification automatically.

### **MODE:**

In the MONITOR mode, press this button to select between live mode and playback mode. In some dialogs, this button is used as a miscellaneous function key.

### **SEQ :**

In the MONITOR or PLAYBACK mode, the monitor will go into single channel full screen auto switch; the default time is 2 seconds.

### **QUAD/CALL:**

In the PLAYBACK mode, press this button to switch to “Quad” display or return from full screen display of the focus camera. In some dialogs, this button is used as a miscellaneous function key.

In MONITOR mode, press this button to enter/exit PTZ Control mode function. In the other displays, press this button to escape to the previous level display.

### **+**

In MONITOR or PLAYBACK mode, press these buttons to increase the volume.

In PTZ control mode, press these buttons to zoom out the camera.



In MONITOR or PLAYBACK mode, press these buttons to lower the volume.

In PTZ control mode, press these buttons to zoom in the camera.



The DVR supports Multi-Tasking. You can view, record, playback and remote control at the same time. The DVR will automatically record the images after the DVR boots up. Pressing this button, forces manual recording. To stop manual recording, press this button again. (REC initials will be shown on the lower-right corner of the screen if manual recording is ON).



Press this button to enter the SEARCH SETTING mode. To search the playback image through different method: Search by Time, Event, Smart Search, Archived Files and POS Search.

In the PLAYBACK mode, press the button to pop-up BACKUP windows to copy the recording image.

Press the STOP button to stop recording image, and then press the LIVE DISPLAY to go back to the MONITOR mode.



In the PLAYBACK mode the button will support the Fast Rewind and Fast Forward function



In the PLAYBACK mode of "Play State" or "Rewind State", it can play and pause on the recording image directly.



In the PLAYBACK mode, you can press the Stop button anytime to stop the playback image.

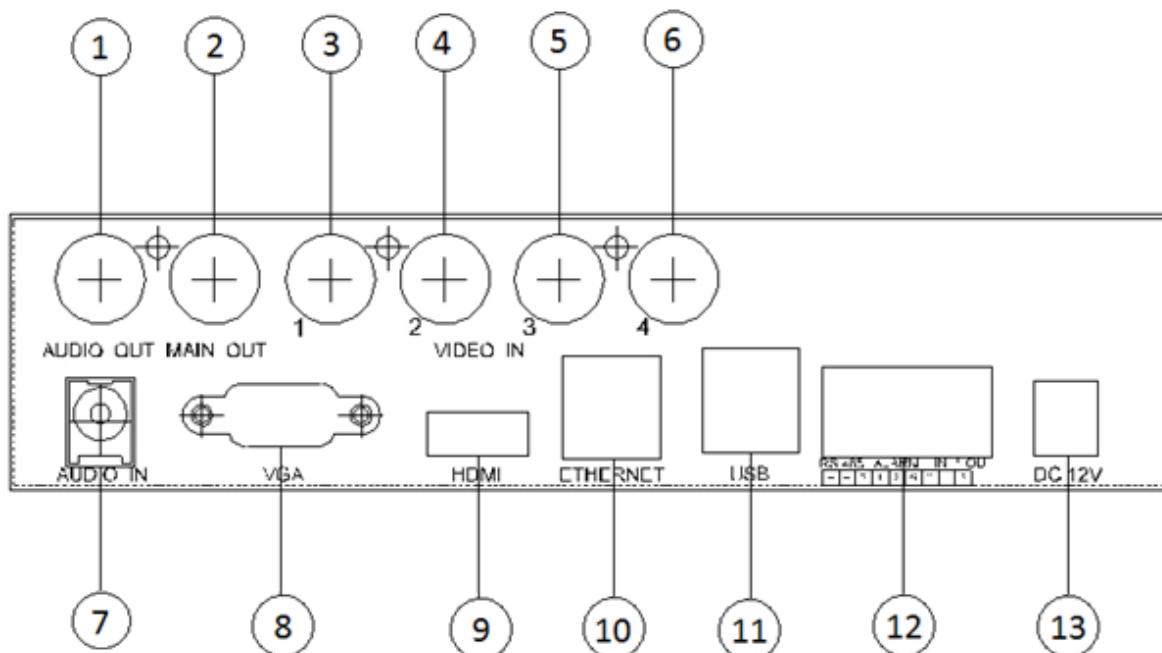


**MOUSE RIGHT KEY:**

You can click the "right-button" of mouse as MENU/ESC key.

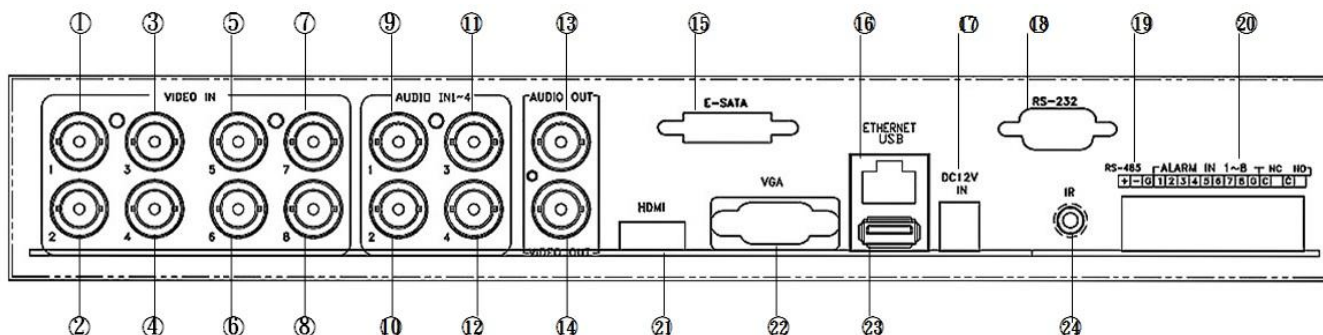


## 1.5. Standard 4 CH Rear Panel



Hardware Interface			
1	Audio Output	8	VGA Output
2	BNC Monitor Output	9	HDMI Output
3	Video Input (CH 1)	10	RJ45 Ethernet Port
4	Video Input (CH 2)	11	USB Port
5	Video Input (CH 3)	12	Alarm Input(1~4) /Output(1~2)
6	Video Input (CH 4)	13	DC 12V Power In
7	Audio Input		

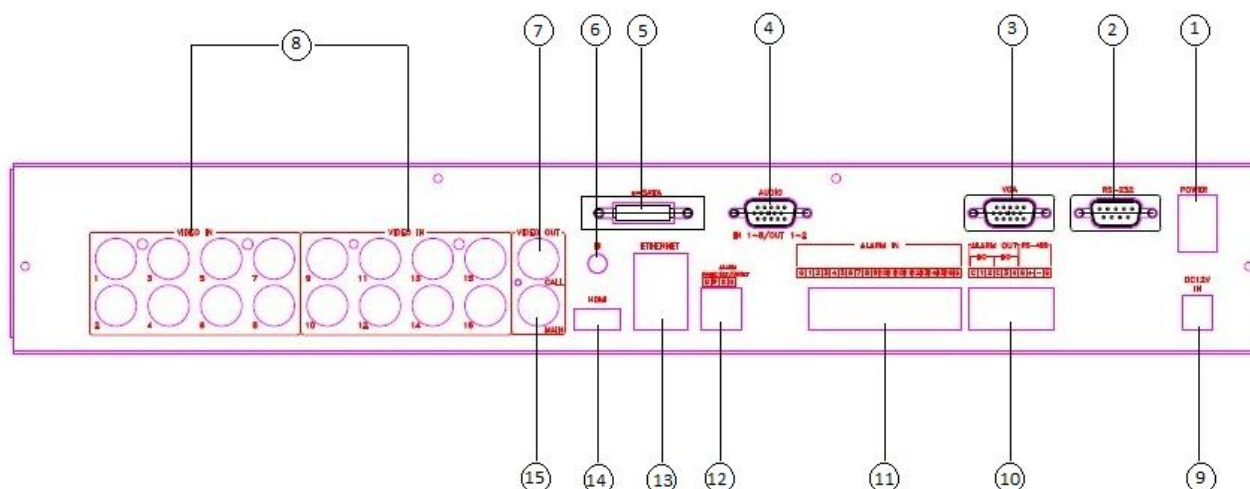
## 1.6. Standard 8 CH Rear Panel



### Hardware Interface

1	Video Input (CH 1)	13	Audio Output
2	Video Input (CH 2)	14	BNC Monitor Output
3	Video Input (CH 3)	15	E-SATA Port
4	Video Input (CH 4)	16	RJ45 Ethernet Port
5	Video Input (CH 5)	17	DC 12V Power In
6	Video Input (CH 6)	18	RS232 Port USB Port
7	Video Input (CH 7)	19	RS485 Port
8	Video Input (CH 8)	20	Alarm Input/ Output; RS485
9	Audio Input 1	21	HDMI Monitor Output
10	Audio Input 2	22	VGA Monitor Output
11	Audio Input 3	23	USB Port
12	Audio Input 4	24	IR Port

## 1.7 Standard 16 CH Rear Panel



### Hardware Interface

1	Power Button	9	DC 12V Power In
2	RS232 Port	10	Alarm Output/RS485
3	VGA Output	11	Alarm Input
4	Audio Input (1~8)/Audio Output(1~2)	12	Alarm set/unset; Panic
5	eSATA Port	13	RJ45 Ethernet Port RS485 Port
6	IR Port	14	HDMI Output
7	Video Output (Call)	15	Video Output (Main)
8	Video Input (CH 1~16)		

#### NOTE :

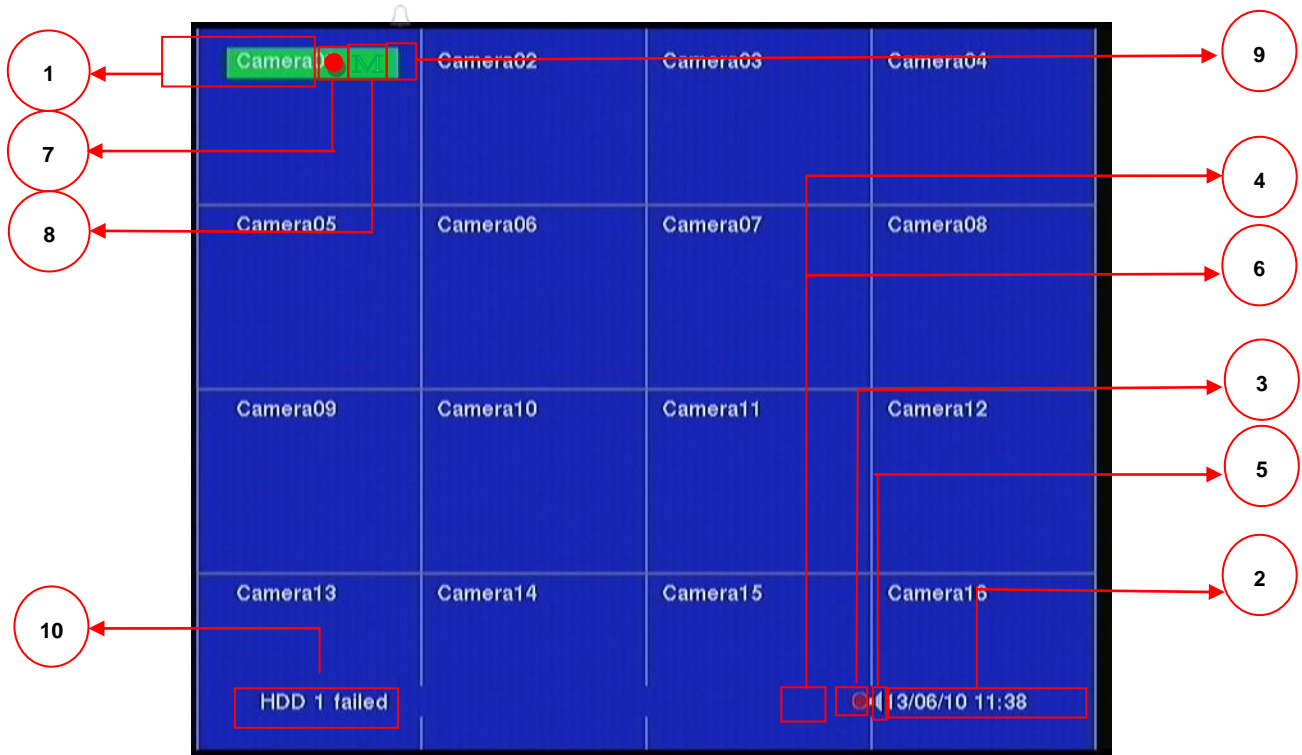
The AHD DVR Series input signal need to be pair, CH1/2 both need to be AHD 720P cameras or both to be analog cameras, CH3/4、CH5/6、CH7/8、CH9/10、CH11/12、CH13/14、CH15/16 are all the same.

Ex: If CH1 is AHD 720P camera, CH2 must to be AHD 720P camera too.

If CH1 is analog camera, CH2 must to be analog camera too.

## 2. Monitor Display Illustration

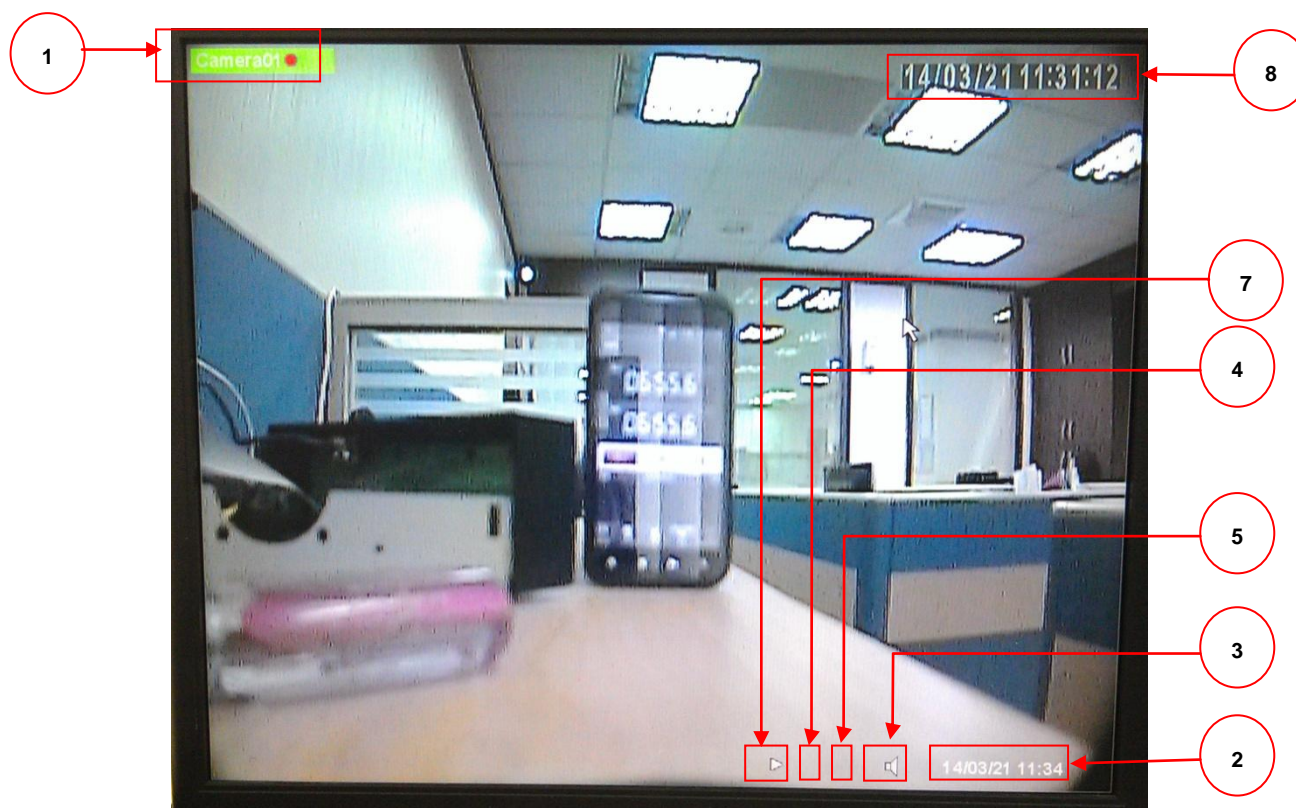
### 2.1 MONTOR Mode



**MONITOR Mode Display illustration**

Number	Item	Camera explanation
1	Camera name	Camera displaying name.
2	Date / Time	Show the real time date and time information.
3	Rec	The force manual recording mode
4	Digital Zoom	enable the digital zoom x2/x4 function
5	Audio	enable the audio function
6	SEQ Sign	enable the SEQ function
7	Record Status	Icon means under recording mode
8	Motion Status	Icon means under motion detection mode
9	Alarm Status	Icon means alarm connection
10	HDD Warring	Warring shows while HDD fail or not install

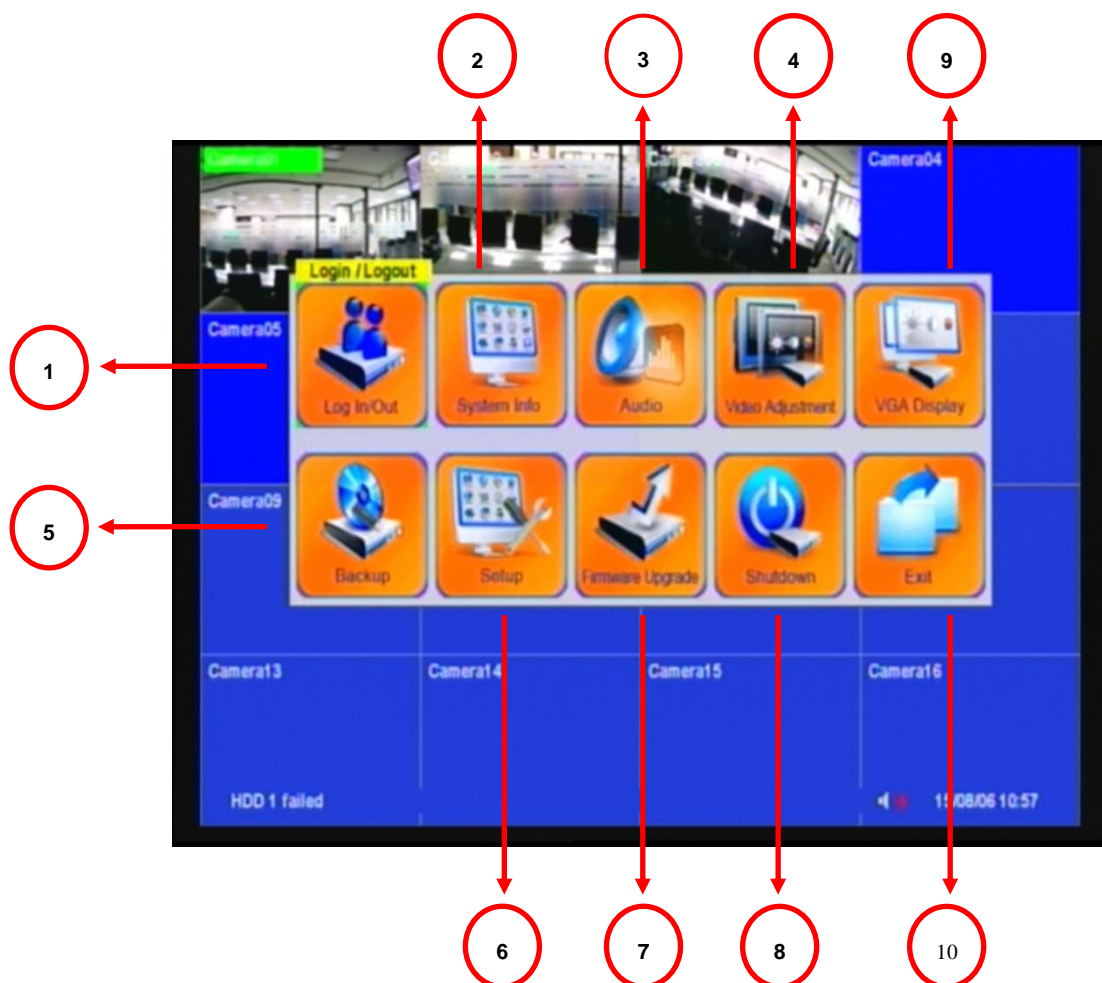
## 2.2 PLAYBACK Mode



**PLAYBACK Mode Display illustration**

Number	Item	Explanation
1	Camera name	Camera displaying name.
2	Date / Time	Shows the real time date and time information.
3	Audio	Enable the audio function
4	Digital Zoom	Enable the digital Zoom x2 / x4
5	Rec	To force manual recording button
6	Backup State	The backup function mode
7	Playback Sign	Enable all playback functions
8	Date / Time	Show the recording date and time information.

## 2.3 MENU SETTING Mode

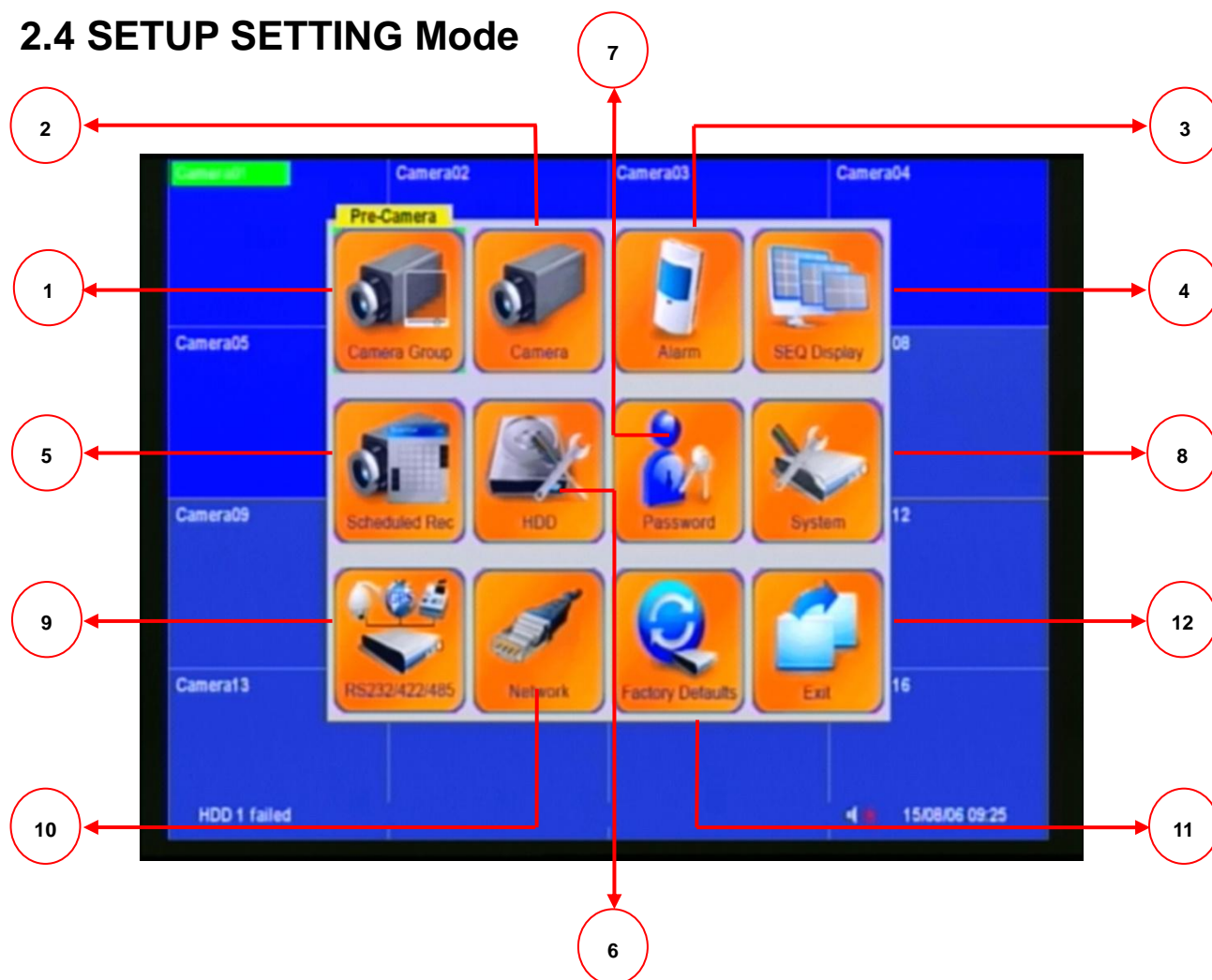


**MENU SETTING Mode Display illustration**

Number	Item	Explanation
1	Log In/Out	Login the DVR through the account
2	System info	Shows the DVR system information
3	Audio	Adjust the audio setting of DVR
4	Video Adjustment	Adjust the camera setting
5	Backup	Use the backup function
6	Setup	Enter the SETTING Mode
7	Firmware	Update the DVR firmware through USB Flash
8	Shutdown	Switching off the power of the DVR
9	VGA Display	Adjust the VGA video out for monitor.
10	Exit	Leave the MENU SETTING mode



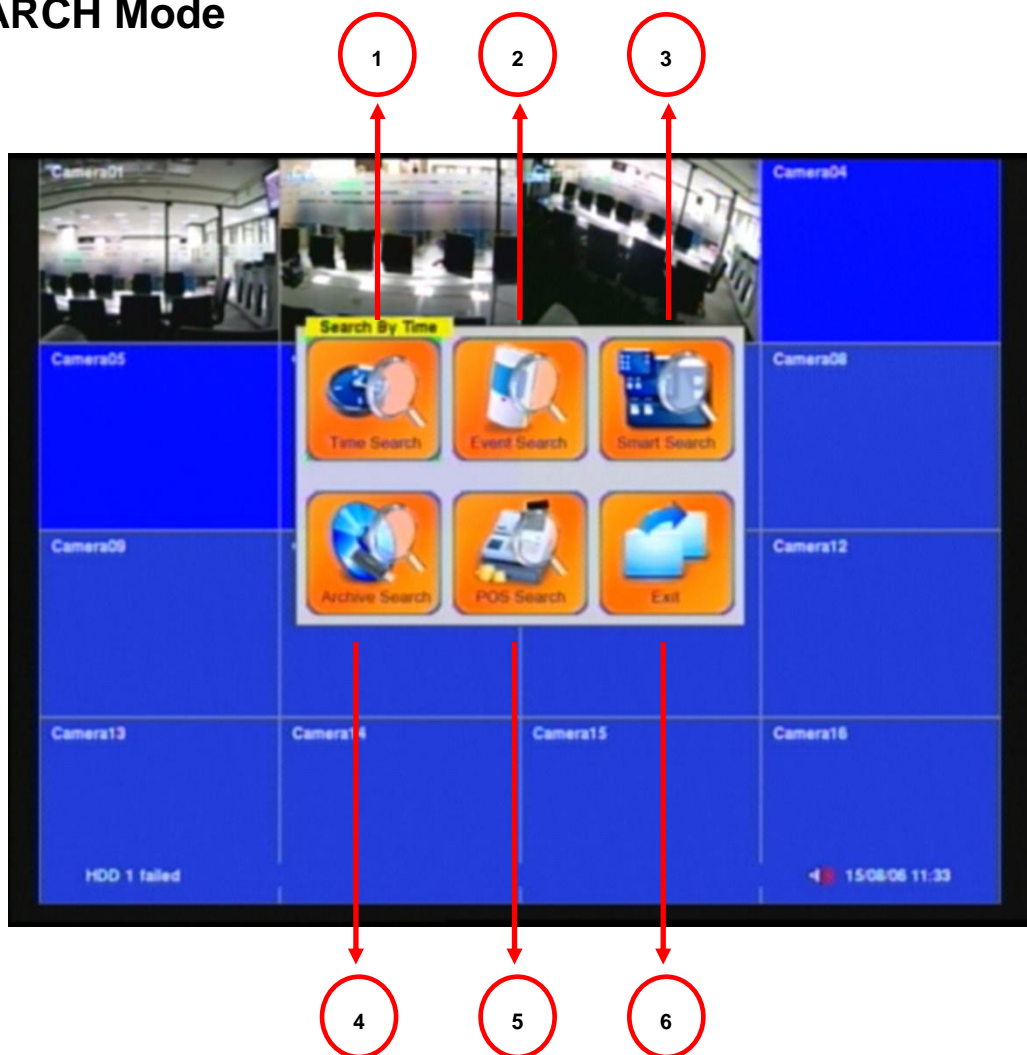
## 2.4 SETUP SETTING Mode



**SETUP SETTING Mode Display illustration**

Number	Item	Explanation
1	Camera Group	Set up the DVR resolution, PTZ and Watermark
2	Camera	Set up the camera info, motion, quality and fps
3	Alarm	Set up the extra alarm function
4	SEQ Display	Set up the SEQ setting
5	Schedule Rec	Set up the alarm, motion or always recording
6	HDD	Set up the HDD recording and figure
7	Password	Manage the DVR's account
8	System	Set up the DVR time and language
9	RS485	Set up the RS485 figure
10	Network	Set up the IP, DDNS, mail and FTP function
11	Factory Default	Reset DVR default setting
12	Exit	Leave the SETUP SETTING mode

## 2.5 SEARCH Mode



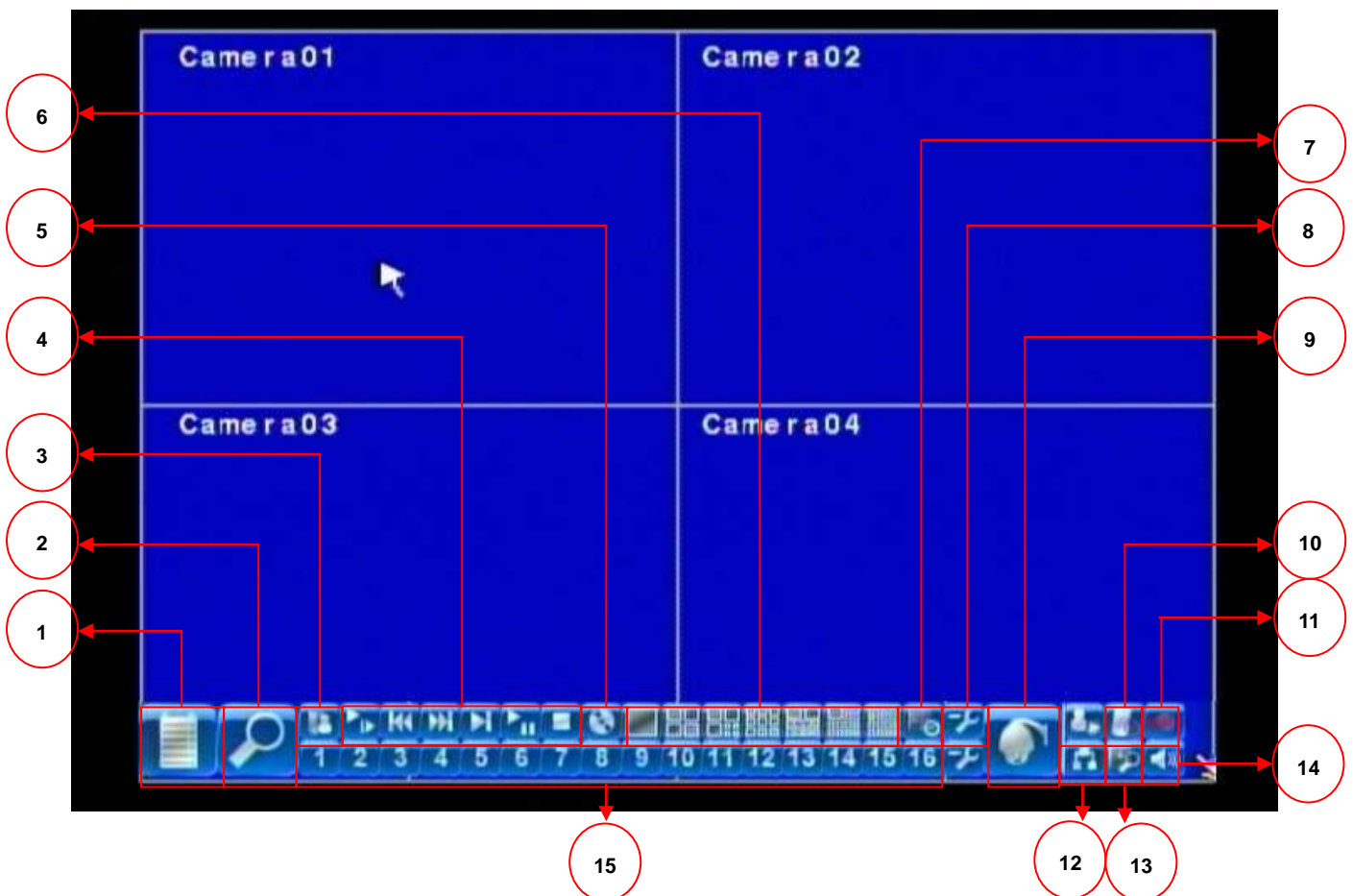
**SEARCH Mode Display illustration**

Number	Item	Explanation
1	Time Search	Select the date and time to playback the recording video
2	Event Search	Select the event to playback the recording video
3	Smart Search	Choose the motion area to playback the recording video
4	Archive Search	Search the backup device's recording video
5	POS Search	Define the keyword of pos' recording data for playback
6	Exit	Leave the SEARCH mode



## 2.6 Mouse Control Illustration

When installing and using the mouse interface, the cursor will be shown on the display for operating the mouse.



Mouse Control Illustration			
1	Menu	9	PTZ Setup
2	Search	10	Alarm Reset
3	ESC	11	Scheduled Record
4	In The PLAYBACK Control	12	GPS/POS/ OSD Display
5	Backup	13	X2
6	Split-Window Display ( 7 mode )	14	Adjust Volume
7	SEQ	15	1-16 Chanel Single Display
8	Switch Bar		

## 3. Interface

### 3.1 Image Input and Output

The DVR provides 4CH video input and output.

- **Video Input**

Cameras connect to BNC connectors.

- **Monitor Output**

Connect TV monitors to the BNC connector for main monitor display.

- **VGA**

Connect VGA monitor to the VGA connector for display.

- **NTSC/PAL Switch**

Select NTSC or PAL according to the local TV system. (Adjust switch inside the main board)

**NOTE :**

You must select the DVR system before DVR booting. If you want to change the DVR system, please switch off the power of the DVR first.

- **Network**

You can view the DVR image through “IE browser” for remote control and remote recording function. Connect this unit to a 10/100Base-T Ethernet network through this port.

### 3.2 Audio Input and Output

Connect audio IN or OUT devices through RCA interface.

- **Audio Input**

These RCA connectors accept audio signals supplied from external devices.

- **Audio Output**

These connectors supply audio signals to external devices. Recorded audio will be supplied from AUDIO OUT during playback.

**NOTE :**

The Audio function cannot guarantee power issue. Please check whether the microphone spec. is compatible with the DVR.

### 3.3 USB Connector

The DVR have some application function for users. Please see the illustration below:

- **USB Connector (Rear panel)**

Connect the USB mouse to this connection.

- **USB Connector (Front panel)**

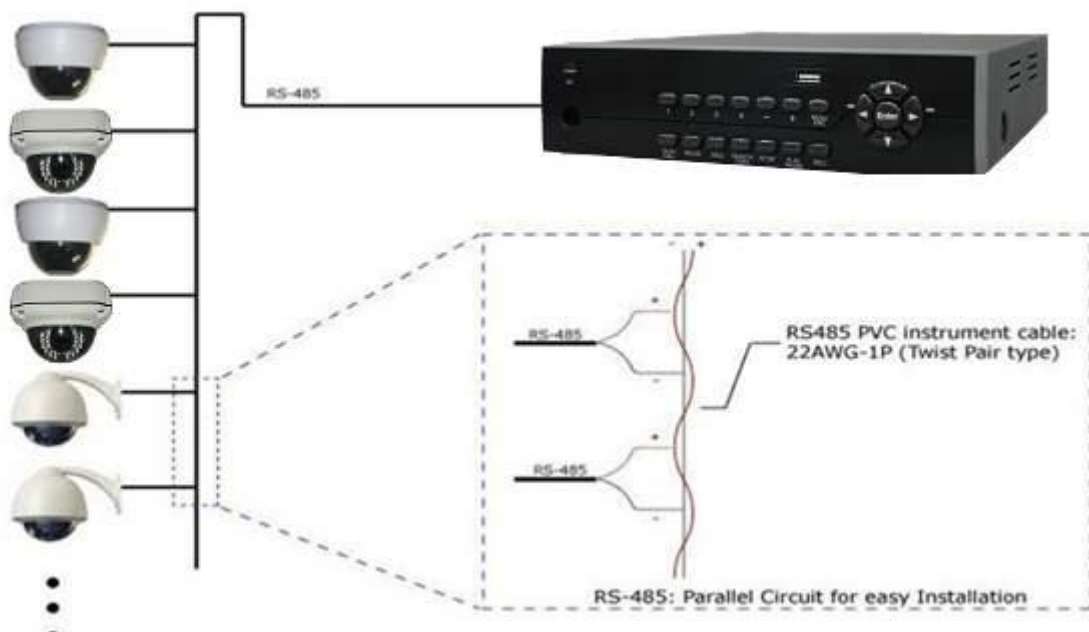
Connect this port to USB 2.0 compatible storage device, such as USB 2.0 disk drive, DVD+RW, etc.

### 3.4 PTZ Device:

- **RS-485 Connector**

Connect this port to RS-485 compatible PTZ camera(s) or keyboard. Please set the Selector Switch correctly.

If there are two PTZ cameras or more need to be connected, it will need to use the parallel way to join the PTZs.



### 3.5 Alarm IN and OUT :

The DVR can work with TTL/COMS alarm signal for LOW & HIGH or N.O & N.C state.

- **ALARM INPUT :**

The extra device connects one for the alarm input, the other for GND. Connect these to external devices such as sensors or door switches.

- **ALARM OUTPUT :**

Connect these connectors to 1 Normally Closed (NC) alarm outputs and 1 Normally Open (NO) alarm outputs. Since the DVR cannot supply any power to the extra device, you can connect the power adapter through COM to provide the electric power. When the alarm triggers, the alarm output will work.

### 3.6 RS-485:

In SETUP SETTING Mode, press **Direct Control** button to change the highlighted option to **RS-485**, and then press **ENTER** to call up RS-485 Setup as shown.

## 4. Network:

### 4.1 The general settings

In SETUP SETTING Mode, press **Direct Control** button to change the highlighted option to **Network**, and then press **ENTER** to call up Network Setup as shown below:

The screenshot shows a 'Network Setup' window with a blue background. At the top, there are tabs for 'Camera01' and 'Camera02'. The 'Network Setup' title is in the center. Below the title, there are five tabs: 'Net Type', 'Static IP', 'E-mail', 'FTP', and 'Adv.'. The 'Static IP' tab is currently selected. Under the 'Static IP' tab, there are four rows of input fields: 'IP Address' (192 . 168 . 100 . 100), 'Net Mask' (255 . 255 . 255 . 0), 'Gateway' (0 . 0 . 0 . 0), and 'DNS' (0 . 0 . 0 . 0). Below these, there is a 'PPPoE' section with 'Username' (87898700@ip.hin) and 'Password' (23726593). Underneath is a 'DDNS' section with 'Type' (N/A), 'URL', 'Username', and 'Password' fields. At the bottom of the screen, there is a status bar showing '10/05/17 13:52 2,3,4 V.Loss 1,2,3,4 V.' and '90%'.

The Network Setup allows the administrator to setup all Ethernet network related parameters. Please check with your network administrator to set these parameters correctly.

The general operations are as follows:

#### Direct Control

Press these buttons to select the items.

#### MENU/ESC

Press this button to escape from this screen, and return to Setup Menu display. If the Save dialog is shown, press **ENTER** to exit and save, **MENU/ESC** to exit without saving.

Following is a brief description for each item and its specific operations:

- **Net Type** – Static IP, PPPoE, or DHCP. DHCP can only be used for intranet (LAN) access, while Static IP and PPPoE can be used for both internet & intranet access. Press **+/-**

buttons to change the Net Type.

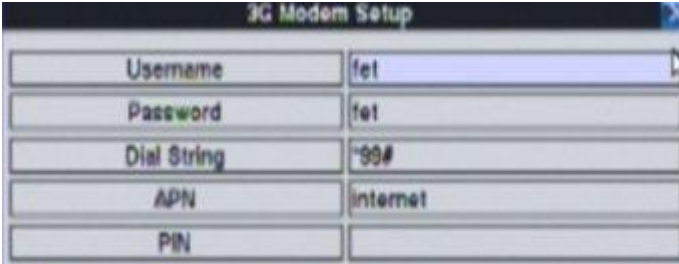
- **IP Address** – Ethernet IP address for the system. To get the static IP address, please contact your local ISP (Internet Service Provider).
- **Net Mask** – Net Mask for the IP address.
- **Gateway** – Gateway IP address for the system.
- **DNS** – DNS (Domain Name Server) IP address for the system.
- **Username** – PPPoE username for the system.
- **Password** – PPPoE password for the system.
- **DDNS Type** – Dynamic, Static, Custom DDNS (Dynamic Domain Name Server) type, etc. Please contact your local DDNS Service Provider to get the DDNS URL, username, and password. Press +/- buttons to change this item.
- **URL** – the URL (Uniform Resource Locators) for the system.
- **DDNS Username** – DDNS username for the system (PPPoE or Static IP).
- **DDNS Password** – DDNS password for the system (PPPoE or Static IP).

**NOTE :**

If DDNS Type is Free DNS, the URL must be appended with “hash”, where hash is extracted from the grab URL batch file that is downloaded from [freedns.afraid.org](http://freedns.afraid.org)

## 4.2 3G Dongle

In the network setting screen, after selecting 3G, press the ENTER key to see the 3G modem setting. The system displays the screen as shown below:



3G Modem Setup	
Username	fet
Password	fet
Dial String	*99#
APN	Internet
PIN	

3G modem settings allow the administrator to set the modem parameters of 3G USB dongle

The following is a brief description of each item and its operation:

- **User name** - ISP requires the user name.
- **User Password** - ISP requires the user password.
- **Dial string** - 3G modem's dial string.
- **APN** - (optional) APN information.
- **PIN** - use the PIN number of the SIM card

## 4.3 DDNS Application

The DDNS service will provide this function. The domain name corresponds with the IP address. But you need to apply for an account from the DynDns.org website. The DynDns.org website provides free service to worldwide users. The following illustration will teach you the step by step method. Please follow the function illustration below:

1. Please input the “DynDns.org” website (<http://www.dyndns.com>) on Internet Explorer then click the “Connect” button.
2. If you have the account in the DynDns.org, you can skip the illustration to no.9. However, if you do not have an account, please sign up for a new account.
3. You will see the new Account creation form. Input the needful information such as: “**User Information**” and see the “**Terms of Service**” and tick if you accept the terms. You can input other information by yourself.
- 4.



**1**

**User Information**

Username:

Email Address:  Indicated in our e-mail your account will be sent to the email address provided.

Confirm Email Address:

Password:  Your password needs to be more than 8 characters and consist of its own set of characters. Do not choose a password that is a common word, or one otherwise too easily guessed.

Confirm Password:

**2**

**Terms of Service**

Please read the acceptable use policy (AUP) and accept it prior to creating your account. Also acknowledge that you may only have one (1) free account, and that creation of multiple free accounts will result in the deletion of all of your accounts.

**4. NO RESALE OR REBRANDING OF DYNDNS SERVICES**

Your right to use the Services is personal to You. You agree not to reproduce, duplicate, copy, sell, trade, or resell, whether by itself or in concert with one or more additional services: (a) any portion of the Services (including your username); (b) use of the Services; or (c) otherwise rebrand the Services (or any portion thereof) in any way.

Additionally, You agree not to use the Services in a way that: (a) expenses the "DynDNS" trademark from the Services (or any portion thereof); (b) obscures the connection between the "DynDNS" trademark and the Services (or any portion thereof); or (c) otherwise rebrands the Services (or any portion thereof) in any way.

I agree to the AUP: ☒

I will only create one (1) ☒ free account: ☒



- After inputting the details, please click the “Create Account” button. If the data is correct, the website will display the “Account Created” information



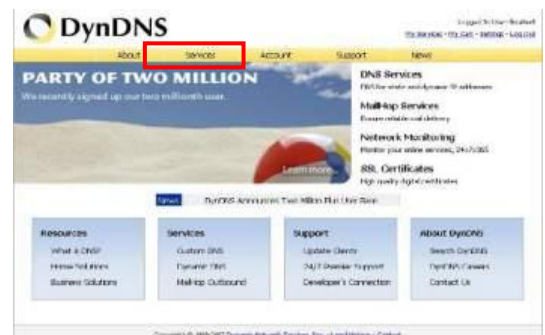
- You will receive the confirmation email from DynDns.org. Please check your email. When you receive the email, please visit the confirmation address to complete the account creation process.



- Click the red square to finish creating the account.



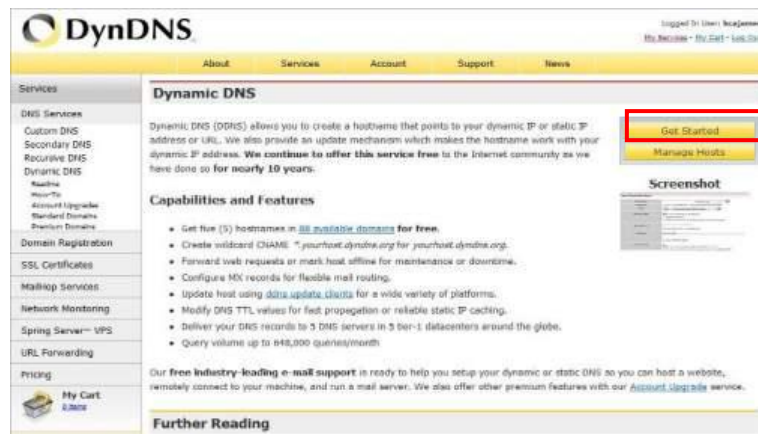
- You can now login to DynDns.org, using the username and password on main webpage. After login, please click on the “Service” button to set the DDNS function.



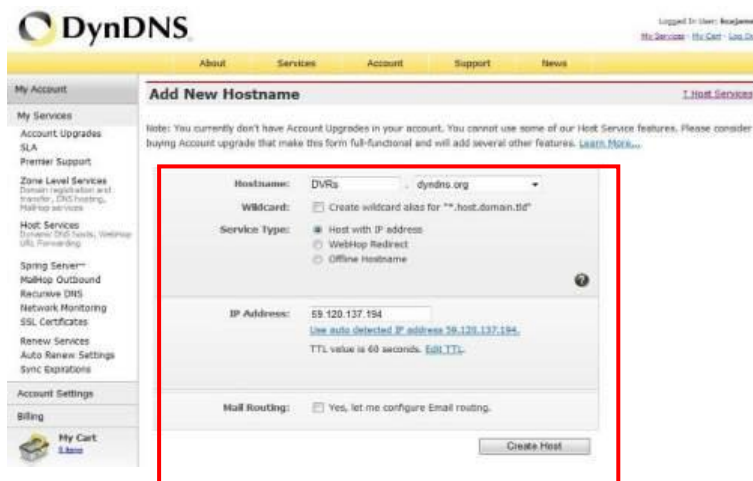
- Please select the “Dynamic DNS” button.



- Click the “Get Started” button to add the new Hostname.



11. Set the “Hostname” and “IP Address” by yourself. You can enter your favorite domain name to “Hostname”, and input the correct “IP address” to IP Address. Finally, click the “Add Host” to finish the setting.



12. The DDNS information will display on the webpage in the end.



13. Please try to connect to the DVR through domain name.
14. If you cannot connect the DVR through the domain name, you can test the DDNS service on your PC.
15. Please open the “command mode” from “**Start Menu**”.
16. Input the command: c:\>ping xxxxx.dyndns.org and press [ENTER].

**NOTE :** The “xxxxx” is your domain name.

17.If the command mode display the figure information.  
Your DDNS is correct.

```
C:\WPGOW\System32\cmd.exe
C:\>ping 192.168.1.1
Pinging 192.168.1.1 with 32 bytes of data:
Reply from 192.168.1.1: bytes=32 time=127ms TTL=248
Reply from 192.168.1.1: bytes=32 time=27ms TTL=248
Reply from 192.168.1.1: bytes=32 time=26ms TTL=248
Reply from 192.168.1.1: bytes=32 time=26ms TTL=248

Ping statistics for 192.168.1.1:
    Packets: Sent = 4, Received = 4, Lost = 0 (0% loss),
    Approximate round trip times in milliseconds:
        Minimum = 26ms, Maximum = 127ms, Average = 48ms
C:\>
```

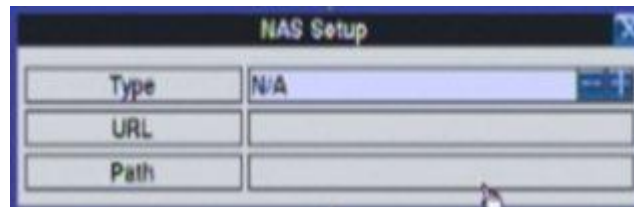
18.If the command mode display the “timed out” information. Your DDNS is wrong.

```
C:\WPGOW\System32\cmd.exe
C:\>ping 192.168.1.1
Pinging 192.168.1.1 with 32 bytes of data:
Request timed out.
Request timed out.
Request timed out.
Request timed out.

Ping statistics for 192.168.1.1:
    Packets: Sent = 4, Received = 0, Lost = 4 (100% loss),
C:\>
```

## 4.4 NAS :

This setting is used to set the machine to connect with the NAS device parameters. Please select the NAS setup and press ENTER (mouse: left button) to set the NAS which as shown below.



**Type - (NFS, no)** – Press + / - keys to change settings.

**Web site** – NAS website. Ex: xxx.xxx.xxx.xxx.

**Path** – Input the path to the NAS directory where the data files can be stored. Please note the English major, lower case, as different paths. In addition remember to add the path symbol '/'.

## 4.5 E-Mail Setup:

In Network Setup, press **ENTER** to bring out the E-mail Setup setting as shown below.



The E-mail Setup allows the administrator to set the email related parameters. When an event occurs and E-mail function has been enabled for the corresponding action, the e-mail will be sent out based on the parameters set here. The general operation are as follows:

### Direct Control

Press these buttons to select the items.

### MENU/ESC

Press this button to escape from this screen, and return to Network Setup display. If the Save dialog is shown, press **ENTER** to exit and save, **MENU/ESC** to exit without saving.

Following is a brief description for each item and its specific operations:

- **SMTP Server** – SMTP mail server name.
- **SMTP Port** – the SMTP port for e-mail transmission. The default value is 25.
- **Authentication** – whether the SMTP mail server requires authentication.  
Press **ENTER** or **+/-** to check/uncheck this item.
- **Username** – username if the SMTP mail server requires authentication.
- **Password** – password if the SMTP mail server requires authentication.
- **Mail From** – the email address of this DVR unit, i.e. email sender of the triggered event.
- **Mail To #1-5** – the receivers' e-mail addresses. The system can send the e-mails of the originated triggered event to up to 5 different receivers.

## 4.6 FTP Setup:

In Network Setup, press **ENTER** to call up FTP Setup



The FTP Setup allows the administrator to set related FTP parameters. When an event occurs and the FTP is enabled for the action, the recorded video/audio for that event will be sent to the FTP server based on the parameters set here.

The general operations are as below:

### Direct Control

Press these buttons to select the items.

### MENU/ESC

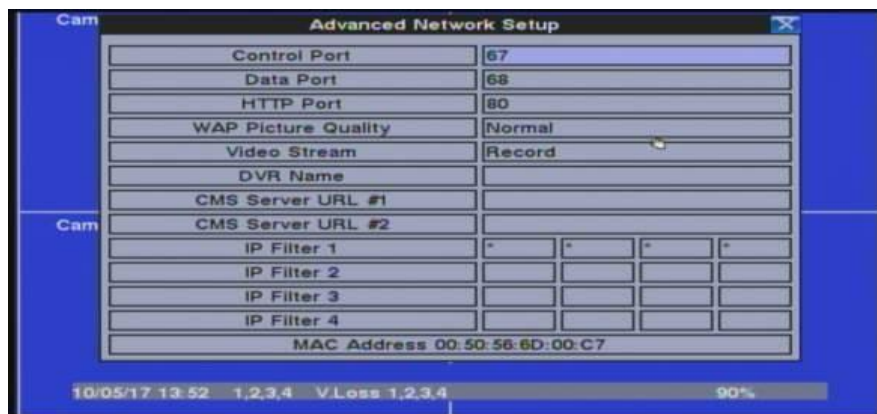
Press this button to escape from this screen, and return to Network Setup display. If the Save dialog is shown, press **ENTER** to exit and save, **MENU/ESC** to exit without saving.

Following is a brief description for each item and its specific operations:

- **FTP Server** – FTP server web/IP address.
- **FTP Port** – the FTP port. The default value is 21.
- **Username** – username for this DVR unit in the FTP server.
- **Password** – password for this DVR unit in the FTP server.
- **Prefix Of Filename** – the prefix of the filenames for the files sent to the FTP server. If it's empty, the filenames will be "cam.."; if not, the filenames will be "Prefix-cam..". For example, if the prefix is "DVR01", then the filenames will be "DVR01-cam..".

## 4.7 Advanced Network Setup:

In Network Setup, press **ENTER** to call up Advanced Network Setup as shown when the highlighted option is Advancing function.



The Advanced Network Setup allows the administrator to set advanced network parameters. If the user is not familiar with network administration, please **DO NOT** modify the items in this dialog. The general operations are as below:

### Direct Control

Press these buttons to select the items.

### MENU/ESC

Press this button to escape from this screen, and return to Network Setup display. If the Save dialog is shown, press **ENTER** to exit and save, **MENU/ESC** to exit without saving.

Following is a brief description for each item and its specific operations:

- **Control Port** – the control port for remote access. The default value is **67**.
- **Data Port** – the data port for remote access. The default value is **68**.
- **HTTP Port** – the HTTP (web page) port for remote access. The default value is **80**.
- **WAP Picture Quality** – the WAP picture quality if WAP access is supported for the DVR. Press **+/-** buttons to change the value.
- **IP Filter #1-4** – the IP filters #1-4 for remote access. Only those PCs with IP addresses matching one of the IP filters can access the DVR remotely.

### NOTE :

If the Control Port or Data Port is not available or accessible during remote access, the system will reset the ports to their default values, i.e. 67/68.

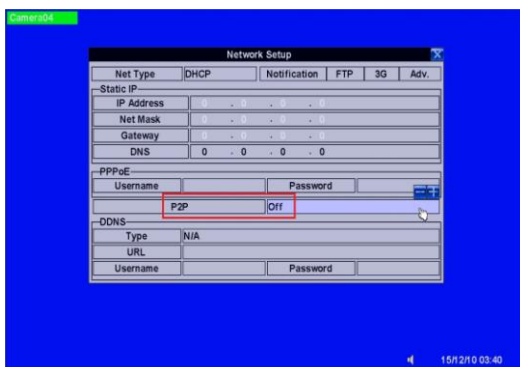
## 4.8 DVR QR CODE features :

DVR → OSD Setup

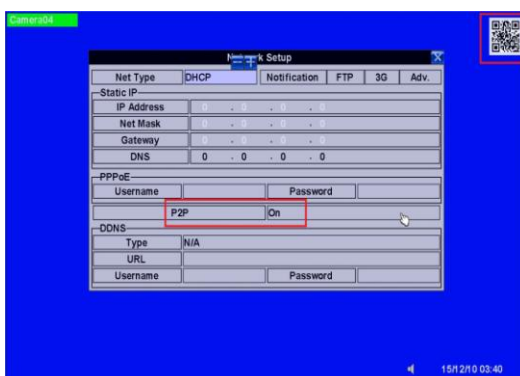
Click “Network”



Original is P2P Off → switch to “On”

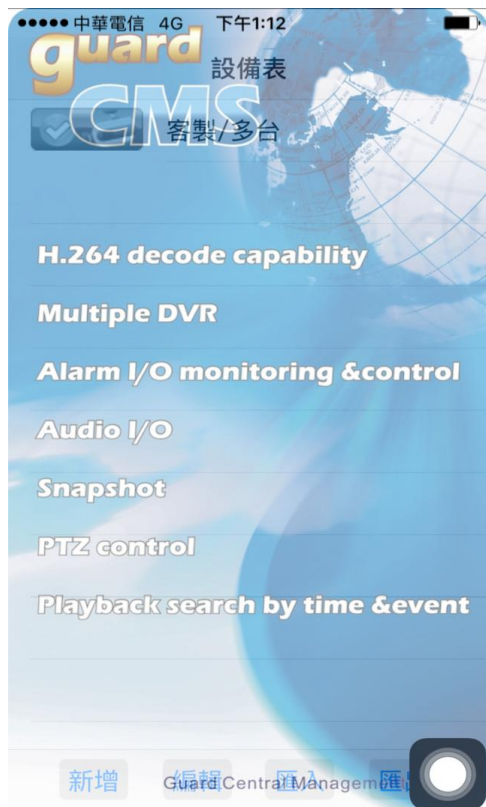


QR Code display on screen automatically





Download the “GuardCMS” from App store on mobile device



Open the QR code features then can scan the QR code





## 4.9 Push Alarm Notification settings :

Step 1.Enable Network Push Alarm: **Menu→Setup→Network→Notification→Push Alarm.**

Network Setup	
Net Type	DHCP
Notification	FTP
3G	Adv.
Static IP	
IP Address	0 . 0 . 0 . 0
Net Mask	0 . 0 . 0 . 0
Gateway	0 . 0 . 0 . 0
DNS	0 . 0 . 0 . 0
PPPoE	
Username	
Password	
P2P	Off
DDNS	
Type	N/A
URL	
Username	
Password	

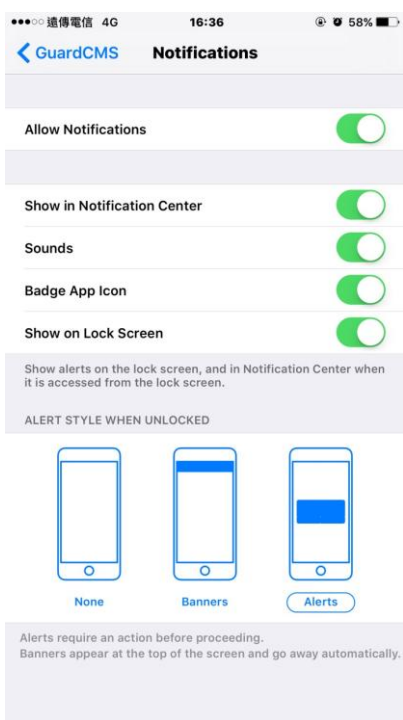
Notification Setup	
E-mail	
SMTP Server	msa.hinet.net
SMTP Port	25
Authentication	—
Username	
Password	
Mail From	
Mail To #1	
Mail To #2	
Mail To #3	
Mail To #4	
Mail To #5	
Attachment	N/A
Push Alarm	✓

Step 2. Enable Notification for the individual Alarm Input: **Menu→Setup→Alarm Setup→Notification.**

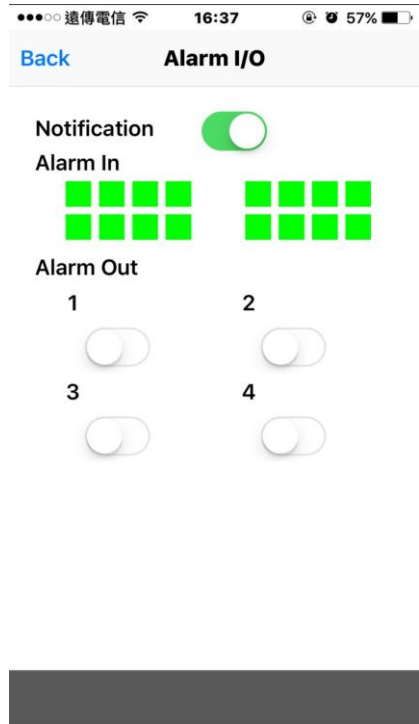
Alarm Setup

No.	1	2
Normal State	Open	Open
Title	AI01	AI02
Delay	0 Sec.	0 Sec.
Duration	10 Sec.	10 Sec.
Alarm Out	N/A	N/A
Buzzer	✓	✓
Focus Camera	1	2
Pre-record	5 Sec.	5 Sec.
Post-record	10 Sec.	10 Sec.
Goto Preset	N/A	N/A
Notification	✓	✓
FTP	-	-

Step 3. Find Settings in your mobile phone → GuardCMS → Enable Notifications



Step 4. Run GuardCMS app, enable the remote app’s Notification in Alarm I/O.



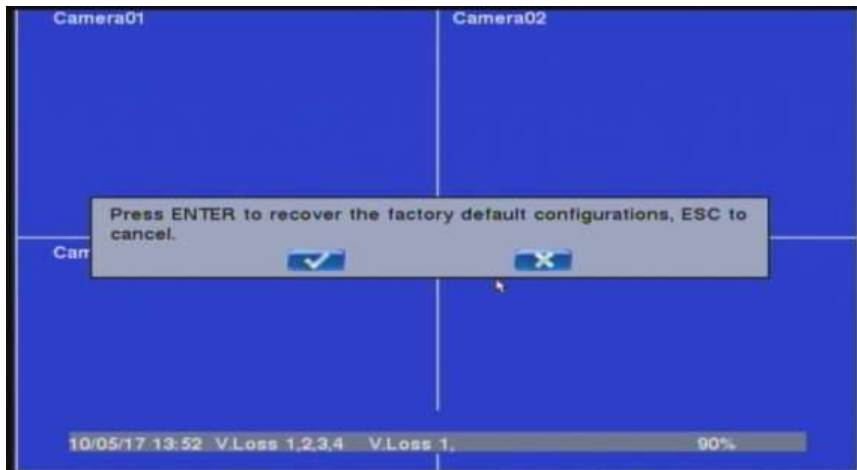
Step 5. Make sure mobile phone & DVR both connect internet.

Push alarm notification as below.



## 5 Factory Default:

The DVR can be set back to original factory default figures through this function. Press the “Direction Control” button to reset the DVR to factory default figure. You can also use the mouse to make the adjustments.



### NOTE :

When you want to reset the default setting, the DVR display will pop-up the confirmation window to check again with customer.

## 6 AHD 1080P UTC Operating Instructions

AHD 1080P DVR supports AHD camera adjustment video resolution without UTC controller.

(16CH DVR support 8CH UTC, 8CH DVR support 4CH UTC, 4CH DVR support 4CH UTC)

### 6.1 Device requirement :

- (1) Camera : 1080P AHD camera.
- (2) DVR : AHD 1080P DVR.

### 6.2 Set up :

Step1. Make sure camera and channel settings.

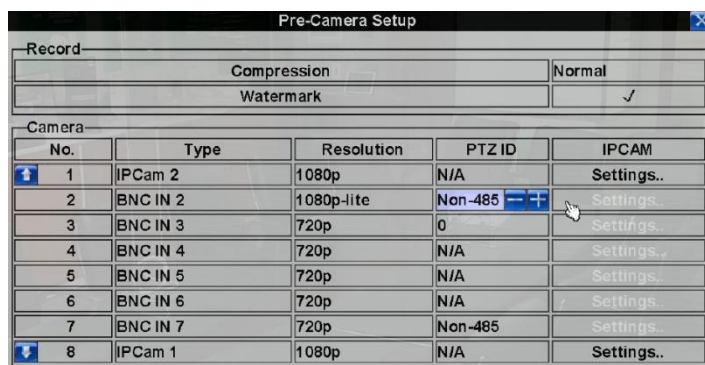
\* Select “ Setup ”.



\* Select “ Camera Group ”.



\* Setup Resolution: “ 1080p-lite ” ; PTZ ID: “ Non 485 ”.

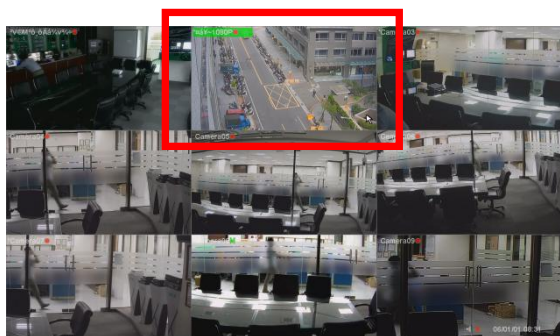


Step2. Select the specified channel.(for 1080p AHD Camera) and entry UTC OSD GUI.



\* Double click screen on the adjustment channel.

\* Select and double click “PTZ” icon.

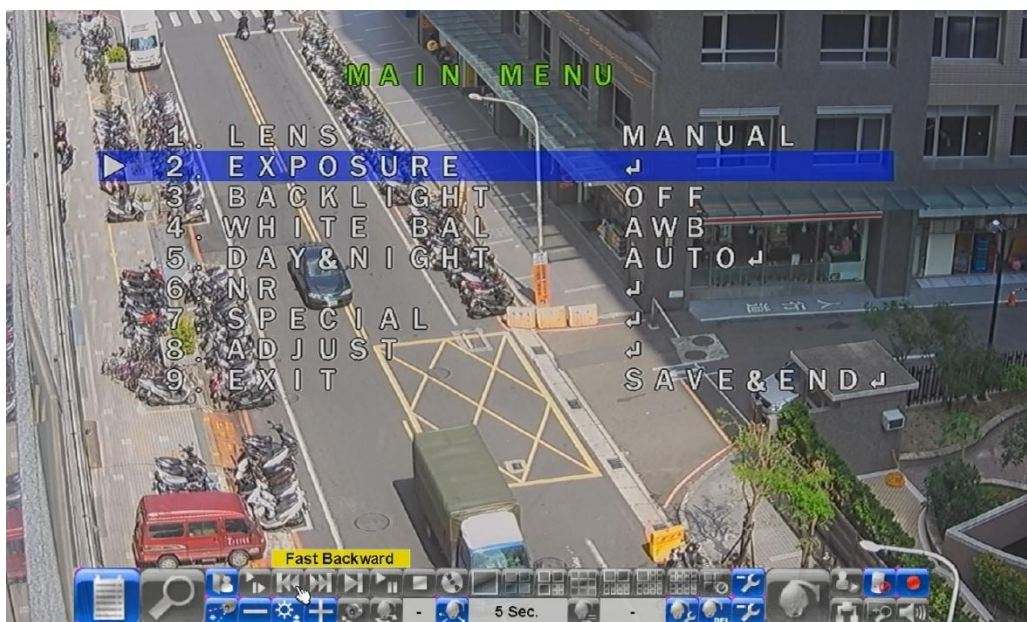


\* Select **zoom** item to **Iris** then click “+” to apply.



Press + to apply setting

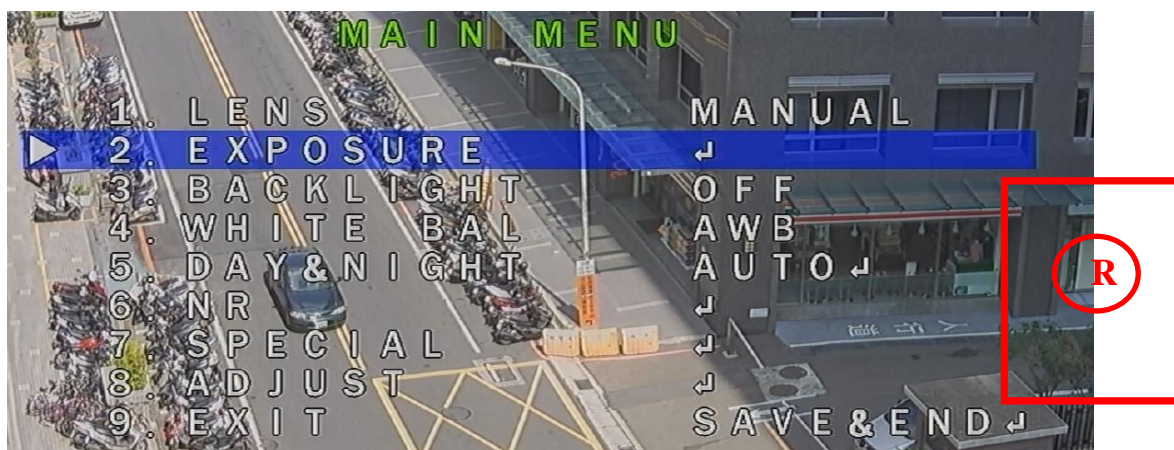
\* User would see that system display as below :



### Step3. UTC OSD GUI settings.

\* Select **EXPOSURE** item then click 3 times in “R” Area.

\* Press + to apply setting.

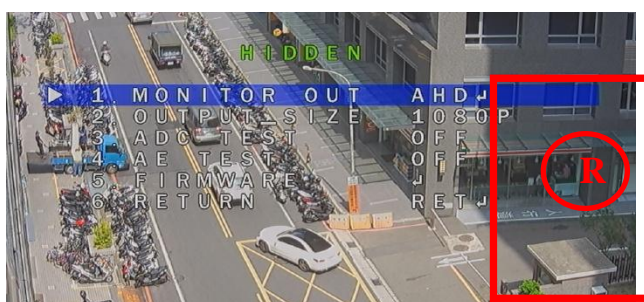


\* user would see that **HIDDEN** system display as below :

\* Select **MONITOR OUT** item then click in “**R**” Area to change settings.



\* Select **OUTPUT\_SIZE** item then click in “**R**” Area to change settings.



Noted: For system requirements, please make sure CH1 and CH2 camera resolution are the same.



## 7 DVR Quick Setup Guide:

This quick start guide will help you become familiar with our DVR in a very short time.

### 7.1 How to quickly set the USER Account function:

\* In the Setup menu, select “ Password ”.



\* Then set Local Guest Level ,Login name ,Password.....



### 7.2 How to quickly set the HDD function:

\* In the Setup menu, select “ HDD ”.



\* Then set Auto overwrite, Alarm record, Normal record, HDD format.....

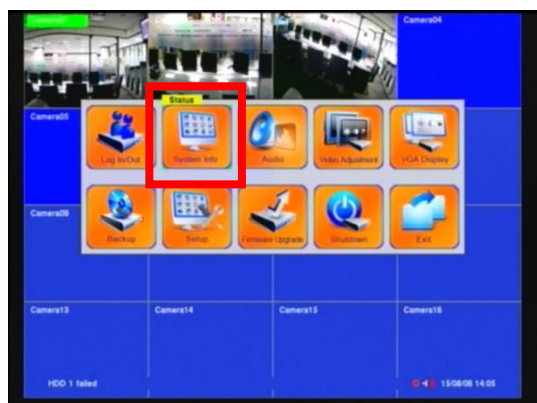




## 7.3 How to quickly set the SYSTEM Information function:

\* In the Main menu, select  
“ System information ”.

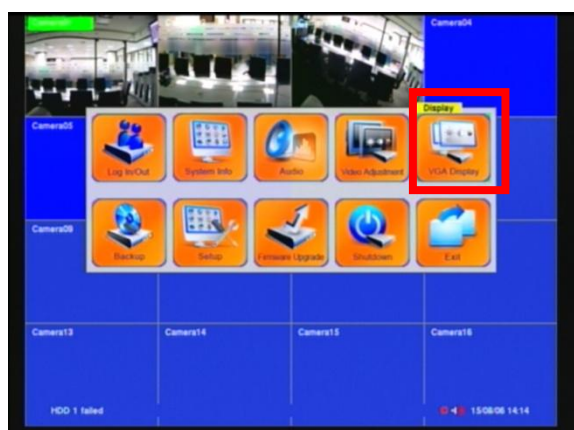
\* Then Check Alarm record status 、 Normal  
record system 、 Camera status 、 product  
Serial number.....



## 7.4 How to quickly set the VGA Display function:

\* In the Main menu, select “ VGA Display ”.

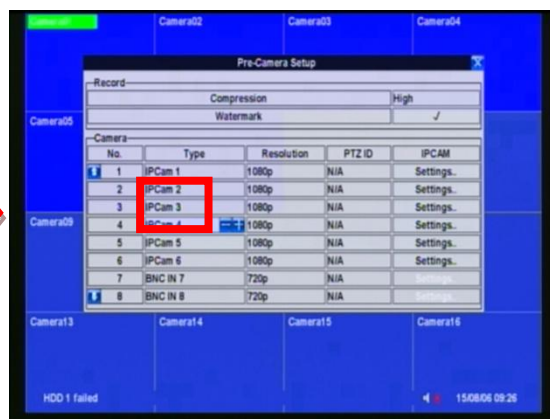
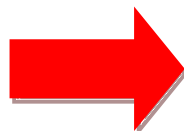
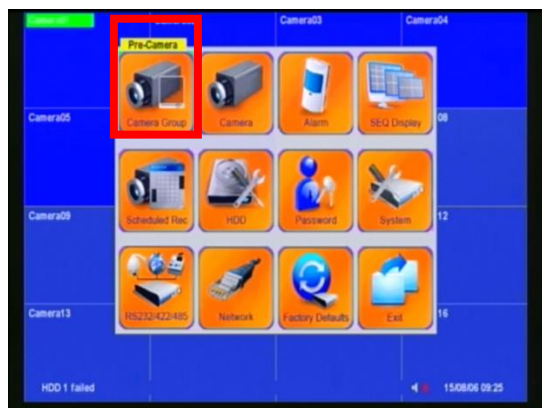
\* Then Set “VGA Resolution” 、 BR 、 CT 、  
HU 、 SA.....



## 7.5 How to set the IP CAMERA function:

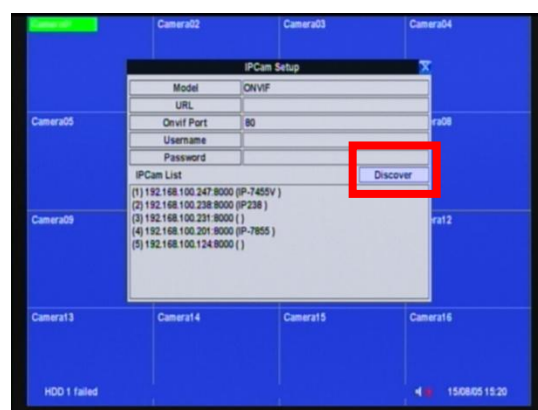
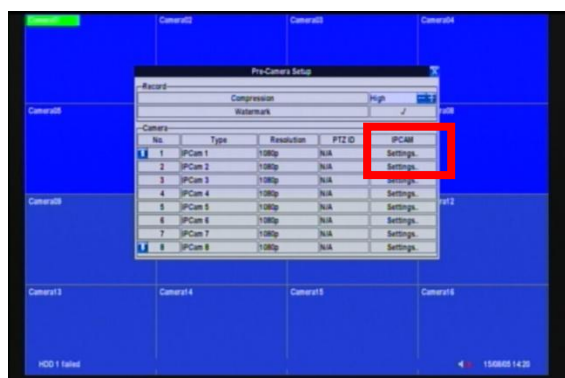
\* Select “Pre-Camera” of the main menu.

\* Change camera type --> “BNC in 1” to “IPCAM1”



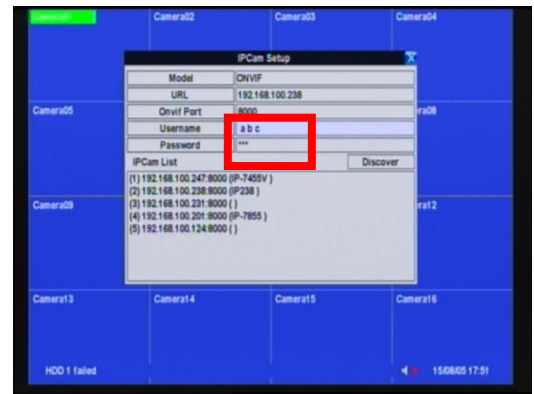
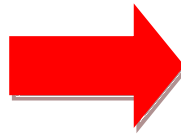
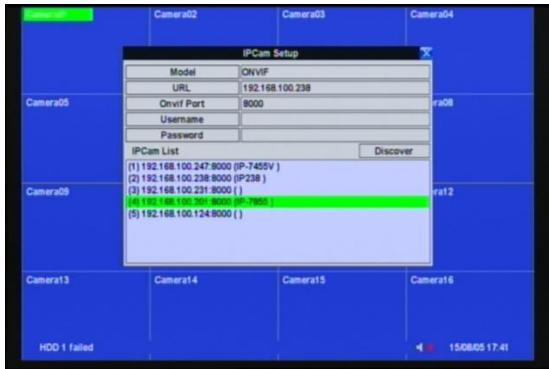
\* Enter “Settings”

\* Click “Discover”

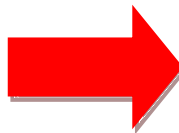
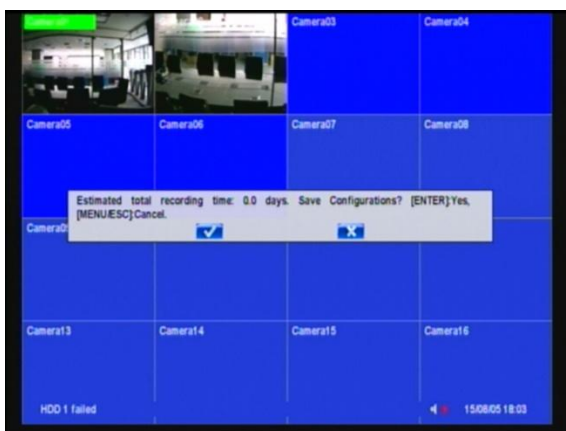


\* Select “IP Camera ID” of the IPCam List

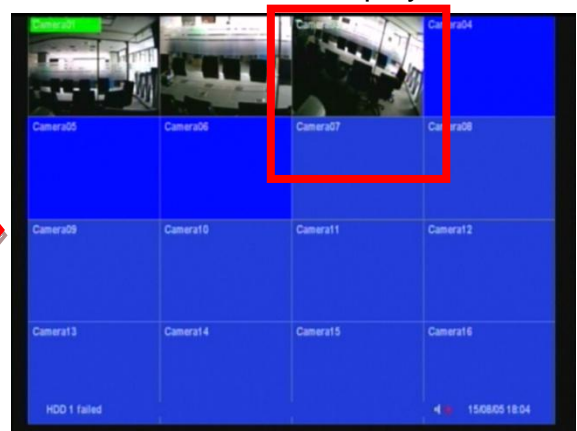
\* Enter “Username”, “password”



\* Press "Enter".

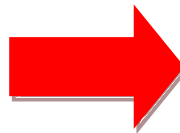


\* Add a Screen to be displayed.



## 7.6 How to quickly set the RECORD function:

\* Select "SETUP" of the main menu.

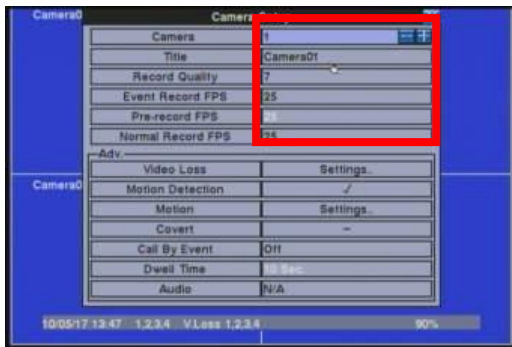


\* Select "Camera"



\* Set each camera's "Title, Record Quality, Record Fps."

\* Confirm this setting and save.



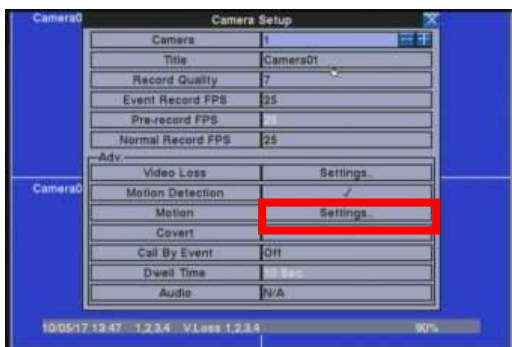
## 7.7 How to set the MOTION function:

\* Select "SETUP" of the main menu.



\* Select "Camera"

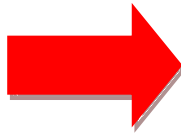
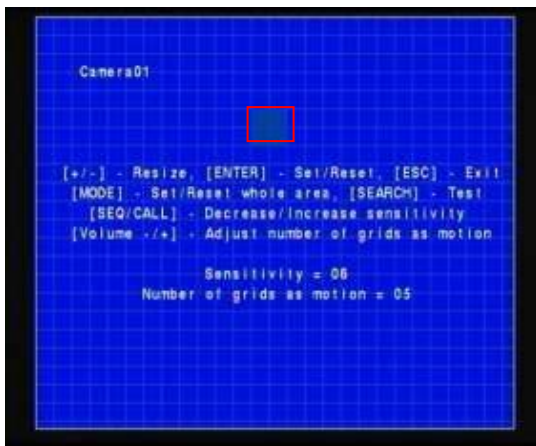
\* Select Detection to enter the "Settings"



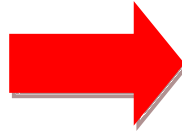
\* Into Motion mode.

In the Motion mode, press "+/-" button to maximize or minimize the area.

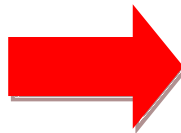




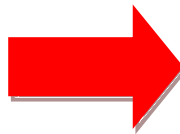
Press the button to set/reset the whole video area



Press the button to test the motion detection of the camera

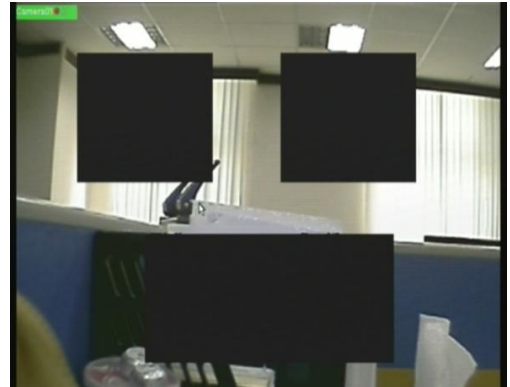
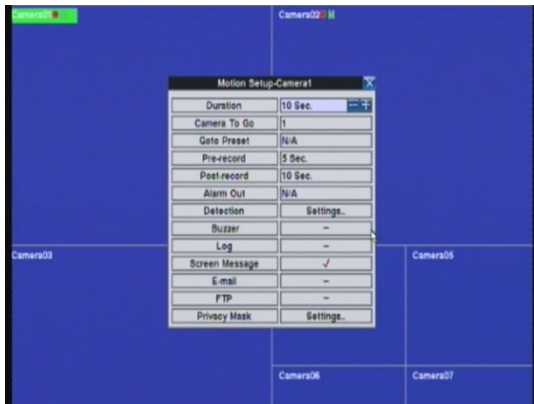


Choose the area where you want to displace, Click "ESC" to save this config setup



## Privacy mask setting

This setting is used to set the camera's privacy mask area. After selecting this setting, press ENTER key to see the camera's privacy zone masking settings. This setting is identical with that of the motion detection setting. This area is a shaded image on the display screen.



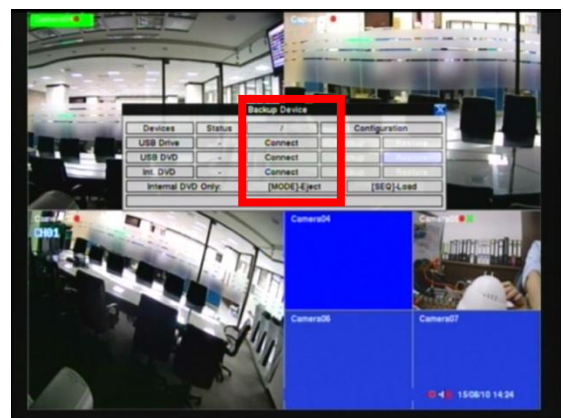
## 7.8 How to set the Back Up function:

\* plug in USB Drive.

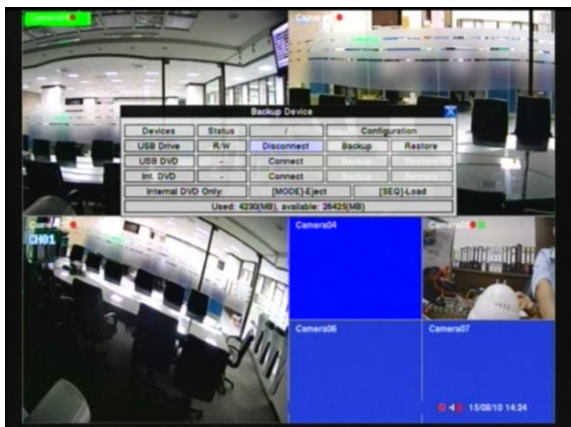
\* Select "BACKUP" of the main menu.



\* Check USB Drive detected.

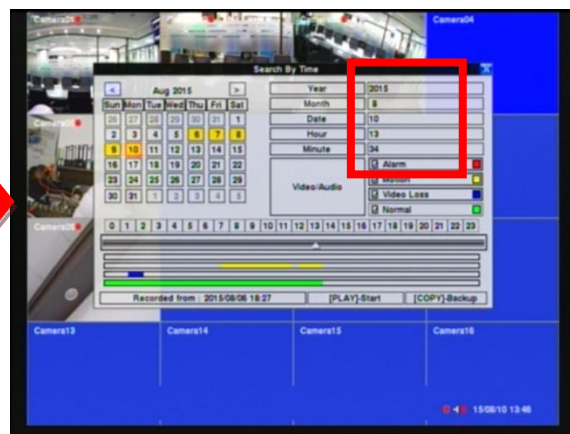
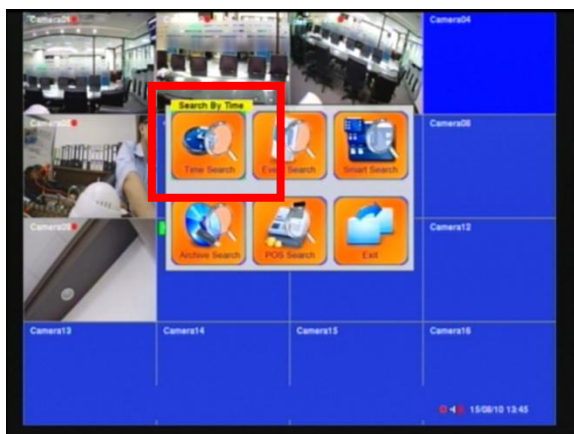


\* USB Drive is connected.



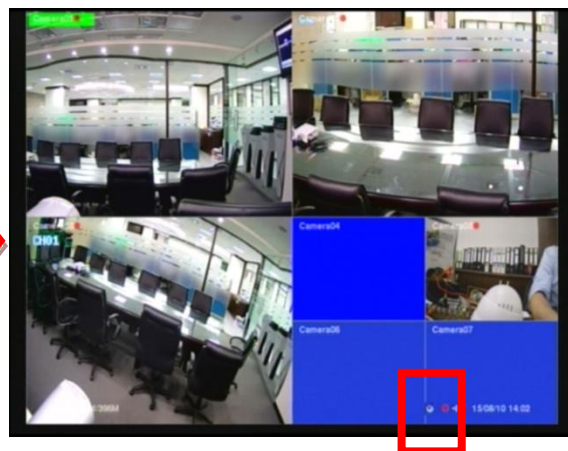
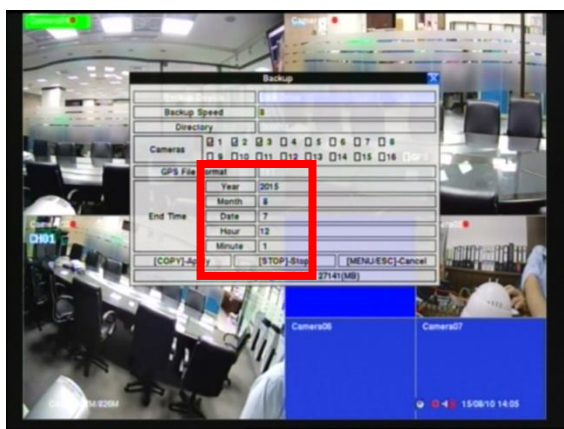
\* Select "Search mode" -> Time Search.

\* Set beginning time then click copy.



\* Set time to End then click copy.

\* Click icon on the screen will disappear when backup finish.





## 8. USB / DVD Playback

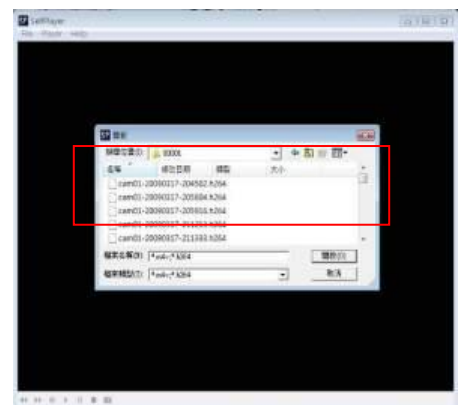
After backup the videos, the USB flash/DVD will include the “SelfPlayer” software and backup recording image file. You can direct to view the backup image through PC/Laptop. You need to plug the USB flash/DVD into PC, and then open the disk of USB flash/DVD.



Click "SelfPlayer.exe" to execute the DVR software



Click the “File” area then click the “Open” button to select the backup recording file.  
Open the USB/DVD disk. (Example F:). The Backup file default name is the “0001”.



After select the backup recording file,  
the DVR will automatically play the image.  
Click the channel to display the full image on the monitor





## 9. Remote view

You can remotely view the image of DVR through the worldwide internet browser. Just input the IP address or domain name on "I.E Browser". The remote function would support viewing image, playback image and recording image.

### System Requirements of Remote PC

It is recommended to access the digital video/audio recorder using a PC that meets the following system requirements.

- **PC**  
IBM PC/AT compatible with Intel® Pentium® 4, 1.7 GHz or above CPU.
- **OS**  
MicroSoft® Windows® XP, Windows® 2000 with SP4, Windows® Vista, Win7 or Win8.
- **Monitor**  
1024 x 768 or above.
- **Memory (DRAM)**  
512MB, or 1024MB for Windows® Vista.
- **Web Browser**  
MicroSoft® Internet Explorer® 6.0 or above.
- **DirectX**  
MicroSoft® DirectX® 9.0 or above.
- **Others**  
Windows XP KB319740 Package if Windows XP SP2 is installed.

### DirectX® End-User Runtime 9.0

It has been installed in your PC successfully. If not, please logon to web page to get the free download of it.

#### NOTE :

Web Page:

<http://www.microsoft.com>

### Windows XP KB319740 Package

It has been installed in your PC successfully if the PC is running **Windows XP SP2**. If not, please logon to web page to get the free download of it, or install it from the corresponding

directory in the CD. (This package is a bug fix for Windows XP SP2.)

**NOTE :**

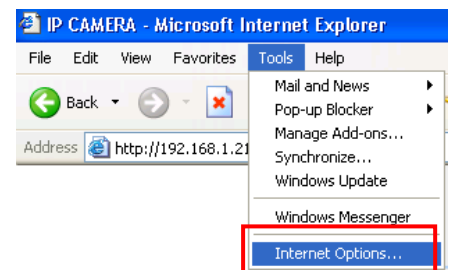
Web Page:

<http://www.microsoft.com/downloads/details.aspx?FamilyId=9B5EDFC8-A4BB-4080-9063-6518166E2DAB&amp;displaylang=en>

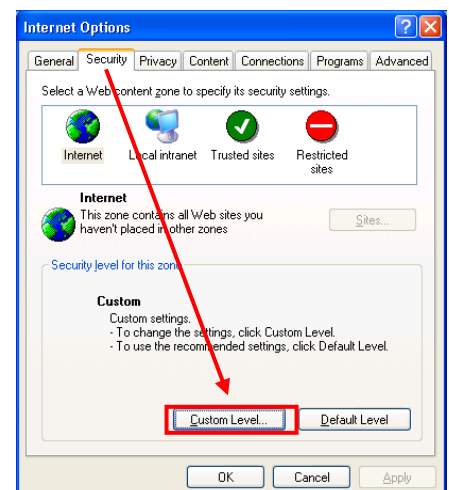
**The VGA Setting from PC/Laptop**

Please go to Start->Setup->Control, select Display->Settings, and set the Screen Resolution to at least 1024x768 and Color to 32-bit. You need to change the security setting of I.E Browser. Please follow the step by step illustration as below:

Open the I.E Browser → select the “Tools” → “Internet Options”.



Select the “Security” bookmarker → Custom Level→ Security Settings→

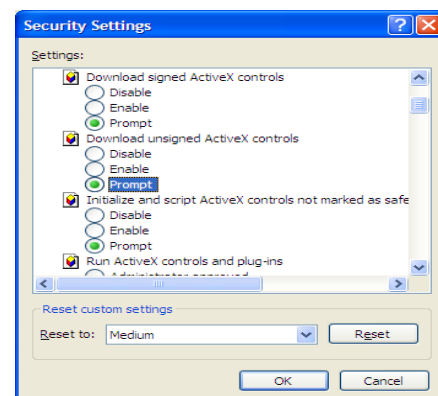


**NOTE :**

The domain name or IP address of the digital video/audio recorder has been set as trusted web site in your PC, and the (https:) server verification for trusted web site is unchecked. If not, please go to Tools->Options->Security in your I.E. to do the settings. For I.E. 7, please set the Security level for this zone to Low.

Enabled or prompt the selection of Download unsigned ActiveX controls,

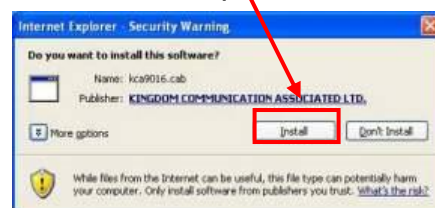
And then click the “OK” button to leave setting.



Open the I.E Browser and input the IP address or domain name of DVR. Press the “connect” button.



The I.E Browser will pop-up the window, please click the “Install” button to set up the software of ActiveX. After install finish, the Internet Explorer pop-up the window again. Please input the user name and password to enter the network viewing mode.



#### NOTE :

The default username is “abc” ; the default password is “123”. The account is the same the DVR account

After the above-mentioned items have been done correctly, restart your web browser and enter the domain name or IP address (EX. <http://192.168.1.100> if HTTP port is 80, or <http://192.168.1.100:800> if HTTP port is 800) of the digital video/audio recorder in the Location/Address field of the web browser. The plug-in software in the system will be downloaded and run automatically in the web browser.

**NOTE :**

Please note that there are up to 8 users can logon this DVR simultaneously.



The video images can be displayed in several types of split-window screens, including 1/4/9/16-Window for single DVR and 25/36/49/64 for multiple DVRs. And the focus window is surrounded by a frame border. In addition to the video windows, there are different icons on the lower corner and the right corner of the screen for status display and control.

**NOTE :**

The “.L” following the camera title stands for Live display, “.P” for Playback, and the camera title with white background has detected motion.

**NOTE :**

The frame rate is limited by the bandwidth of the network and the pre-record IPS of the camera

The picture quality depends on the recording resolution and recording quality of the camera

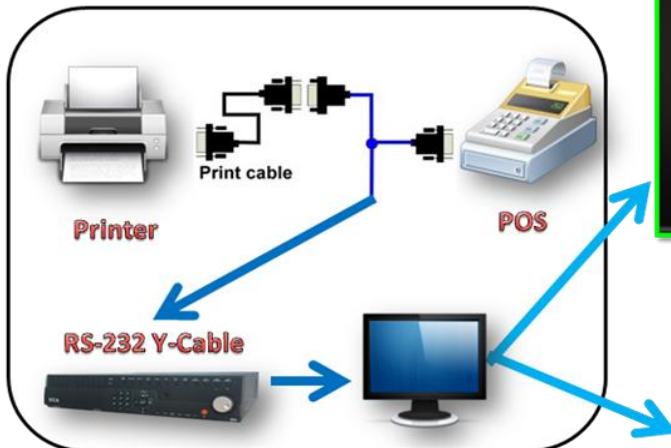
About the IPS and quality setting please make reference to the chapter of **Camera**.

When the user leaves I.E., you may be asked to save changes to files, please click on OK or Yes to save the changes. The operations and descriptions for these icons are as below:  
In video window, right-click the mouse button to call up Camera/Playback/Print Dialog. (Left) click on Playback or Camera number to change the window to the corresponding camera and live/playback mode. The user may also click on the “Print” button to print the video to the printer, or “Snapshot” the video.

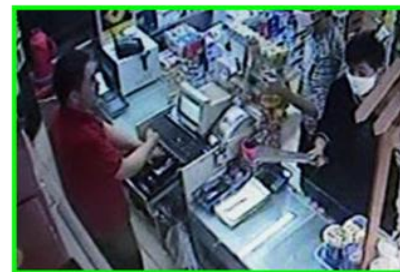
## 10. Support GPS / POS

The DVR can support all GPS / POS on the market.

### POS - Application



Checkout data display



Search POS Images

Through the RS-232 Port to connect POS & Printer.  
Allows users to search for event's images and  
POS checkout data in the same time.  
All of information could be uploaded to display on screen

- Through the RS-232 series to connect with more POS and Printer.
- Use the "RS-232 protocol converter" to reach COM mechanism for multiple POS

**Connect up to 16 POS in the same time**



## GPS



**DVR's GPS positioning system  
to find your destination.**



**Full management of different  
DVRs in wide area  
(Interlocking Google earth)**



**Automatic Driving Surveillance  
Recorder with GPS**



## 13. Support Hardware List

There are many HDD spec. Please read the suggested list to buy the applicable hardware that combine with the DVR. The DVR can support the HDD storage until 2TB.

### NOTE :

The DVR almost support all HDD on the market. The list is the reference data for user.

Compatible HDD List		
3.5"	2.5"	SSD
Seagate ST32000542AS 2TB	Toshiba MJA2500BH 500G	Intel SSDSA2M080G2GC
Seagate ST31500341AS 1.5TB	Fujitsu MHZ2160BH 160G	Intel SSDSA2CW120G3
Seagate ST31000528AS 1TB	WD WD3200BEVT 320GB	Intel SSD 320 Series 80GB
Seagate ST31000340NS 1TB	WD WD5000BEVT 500GB	Intel SSD 320 Series 120GB
Seagate ST31000322CS 1TB		Intel SSD 320 Series 300GB
Seagate ST37500528AS 750GB		
Seagate ST37500330AS 750GB		
Seagate ST3500410SV 500GB		
Seagate ST3500418AS 500GB		
Seagate ST3500320SV 500GB		
Seagate ST3500320AS 500GB		
Seagate ST3500312CS 500GB		
Seagate ST3320620SV 320GB		
Seagate ST3160815AS 160GB		
Seagate Barracuda XT 3TB		
WD WD20EADS 2TB		
WD WD20EVDS 2TB		
WD WD15EADS 1.5TB		
WD WD10EVVS 1TB		
WD WD10EADS 1TB		
WD WD10EACS 1TB		
WD WD10EVDS 1TB		
WD WD1002FBYS 1TB		
WD WD640AVVS 640GB		
WD WD5002ABYS 500GB		
WD WD5000AAKS 500GB		
WD WD2500AAKS 250GB		
WD WD2500AVJS 250GB		
WD WD2500AVVS 250GB		
WD WD1600AVJS 160GB		
WD WD1600AAJS 160GB		
Hitachi HCT721010SLA360 1TB		
Hitachi HDS721075KLA330 750GB		
Hitachi HCP725050GLA380 500GB		
Hitachi HDS721050CLA362 500GB		

## 11. Support USB Flash and DVD List

There are many USB Flash and DVD spec. Please read the suggested list to buy the applicable hardware that combine with the DVR.

Type	Format
USB-Storage Enclosures 5.25"	Macpower's Alumni Prefect USB 2.0 - PF-U2MS.
USB-Disk Storage	<a href="#">Transcend's JetFlash 150/V60 Series</a> ,
	<a href="#">Apacer's Handy Steno AH220</a> ,
	<a href="#">Pretec's i-Disk Wave 512M-Black</a>
	Kingston's Data Traveler USB Flash Driver(DTI/512FE)
	SanDisk's <a href="#">Cruzer micro USB Flash Driver</a>
	Sony's MICRO VAULT Classic Series
DVD Writer	Asus DRW-1608P Series
	Pioneer DVR-A11, DVR-X152 Series
	<a href="#">BenQ EW200G Series</a>
	LITEON Light Scribe DVD Writer SHM-165H6S, 20X DVD Writer DX-20A4P
	Sony DVD/CD Rewritable Drive Model DRX-810UL Series
	NEC DVD/CD Rewritable Drive Model ND-4550A Series
	HP dvd9404e External 18X Super Multi DVD Writer Series
	<a href="#">Infomedia DVD+R 16X</a>
	Mitsubishi DVD+RW 1-4X
	Philips DVD+RW 1-4X
	<a href="#">Ritek DVD-R 8X</a>
	<a href="#">Ritek DVD+RW 1-4X</a>
	Verbatim DVD+RW 1-4X



## 12. PDA / Mobile Phone Remote Access

The digital video/audio recorder can also be remotely accessed by using a web browser installed on a PDA or mobile phone.



- (1) Supports **xHTML** and **MJPEG file format**
- (2) The screen resolution will at **240x320** or above.
- (3) Support iOS / Android / Firefox / Symbian 6.0 / Linux / Windows Mobile

Please enter the domain name or IP address of the digital video/audio recorder in the Location/Address field of the web browser, and the remote login display will be shown. For most of the mobile devices, the DVR will automatically redirect to the correct web page, EX. <http://192.168.1.89/wap.htm> for IP address <http://192.168.1.89>.

If not, please enter the full address with /wap.htm, the user may need to enter <http://192.168.1.89:800/wap.htm> if HTTP port has been changed to 800.)

Please enter the correct login name and password for the digital video/audio recorder to login the system, and the screen will be shown as below.

## 13. Firefox browser Remote Access

Users want to use Firefox browser to access the system, make sure that the following:

1. Execute Firefox.
2. Login “<http://ietab.mozdev.org>” web,
3. Select Tools>IE Tab option.
4. Select Sites Filter.
5. Select “Sites list here will always render using embedded IE”, and add the <http://xxx.xxx.xxx.xxx/ie.htm> sites to the local pc.




6. Enter DVR path <http://xxx.xxx.xxx.xxx/ie.htm>

## 14. GuardCMS Installation guide for iPad / iPhone

### 14.1 GuardCMS Install


Step 1: On your iPad or iPhone, find the APP Store icon  and open icon function.



Step 2: a) On the APP store page, click on the “Search” function icon  at the bottom right field marked.




b) On the top blank search option marked 2 (b), type “guardcms” and search for our application.

c) After searching, the page will show our application.


d) Click on  to proceed.

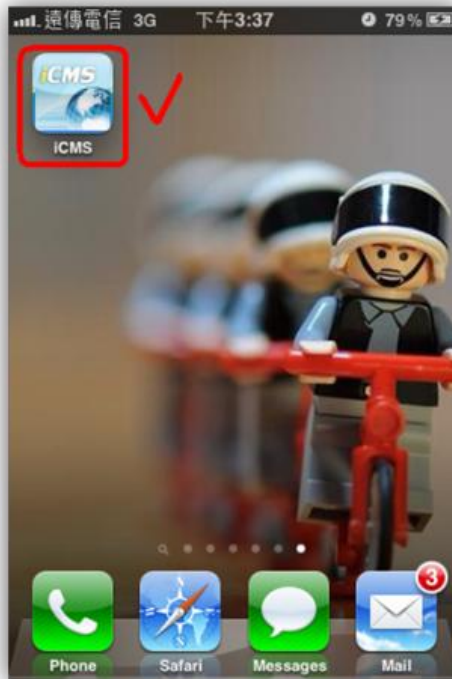


Step 3: After clicking on free, the next page shows you the information about our software application.

Tap on the FREE icon again  and the icon changes to . Tapping on this  icon will install our application to your iPhone or iPad.



Step 4: After installation, our GuardCMS icon  will appear on your iPhone or iPad screen.



## 14.2 GuardCMS User manual

1. To start GuardCMS application, find our GuardCMS icon iPad and open function.



on your iPhone or

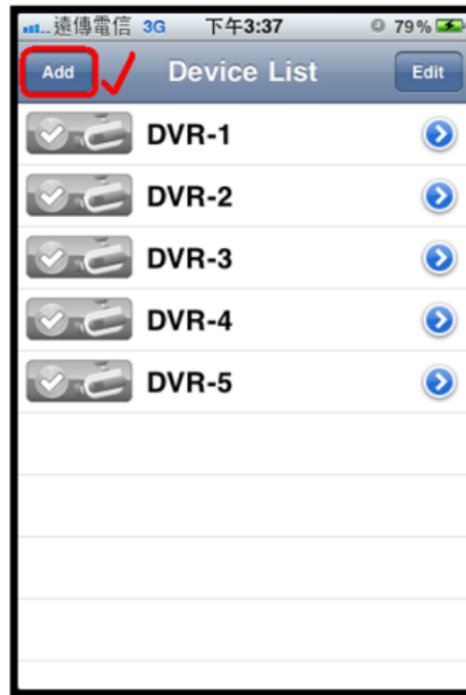


2. The main page shows the features of our GuardCMS application.



3. In order to add the DVR device which you want to view remotely into the GuardCMS application, please select the “Add” icon on the top left hand corner.





4. When you press “Add”, the application will need you to set the Name, Address, Control Port, Data Port, User Name, Password and Auto Connection requirement. Please follow the instructions on the Diagram 4.0 shown below and then press “OK” to save and exit the settings.

**Annotations and Instructions:**

- (1) Device Name: . *User can name the Device in accordance to its preference. eg: Home Front Door, Home First floor, Office, etc...*
- (2) Address: . *Please input the Device IP address. This IP address should be provided by your ISP and it should be a fixed IP address. eg. 192.168.XXX.XXX*
- (3) Control Port: . *For all Control Port and Data Port settings, the Ports are fixed at 67 and 68 respectively.*
- (4) Data Port: . *For all Control Port and Data Port settings, the Ports are fixed at 67 and 68 respectively.*
- (5) User Name: . *Please input the username as abc and the password as 123*
- (6) Password:
- (7) Auto Connect: ☐ OFF. *Please select if you want the auto connect fuction to the remote DVR ON or OFF. So next time when you login the system will automatically connect to the remote DVR.*

**Note:** Press the top right hand corner OK to connect after all the settings above are made according to your preference.

5. After successful setting, Diagram 5.0 will show up on your iPhone or iPad.



## 6. The Function Buttons illustration:



(1)  Audio-In Function.

(2)  Audio-In Function.

(3)  Snap Shot Function.

(4)  Time Search Function.

(5)  Event Search Function.

(6)  Alarm In / Out.

## 7. Channel Display Selection:

(i) User Can Select from 1 – 16 channels





(a) Full Screen Mode

(b) Quad Screen x 4 channels

(c) 9 Grid Display

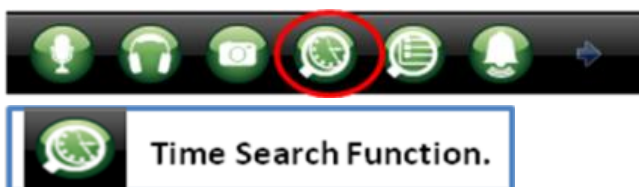
(d) 16 Grid Display

## 8. Multi DVR selection:



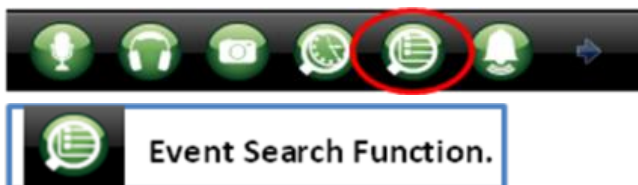
When you select this area (1), the various DVR which you have successfully set will be shown (2). Please select the DVR which you want to view by tapping on it and it will connect to the selected DVR.

## 9. Time Search Function illustration:





10. Event Search Function illustration:



**Bottom icon Functions:**

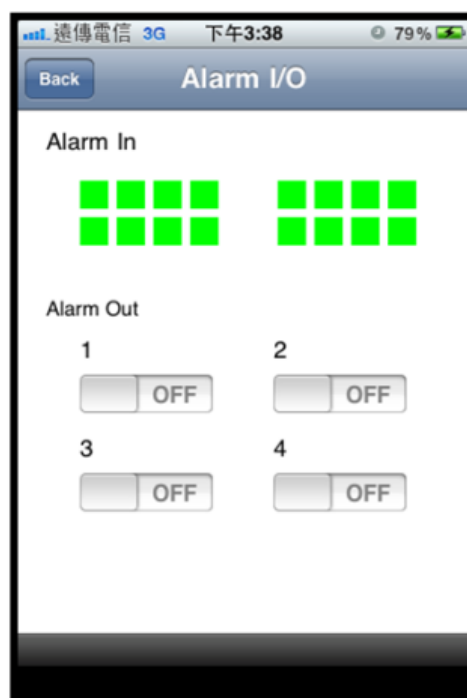
- (i) Refresh
- (ii) Previous Page
- (iii) Next Page





#### 11. Alarm Input and Output Status:

If the Alarms are connected, then the display shows the number of alarms connected. You can select to switch on or switch off the Alarm out.

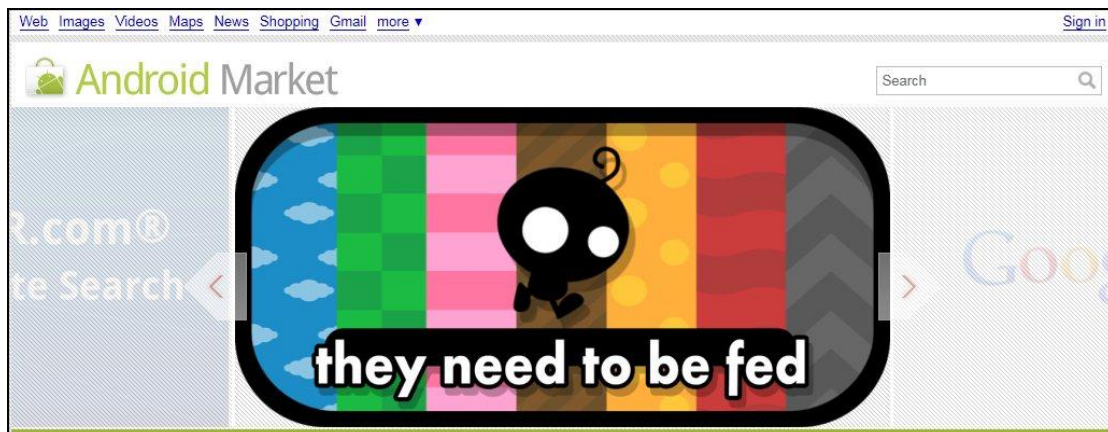



## GuardCMS: Using PC (web based) internet download illustration.

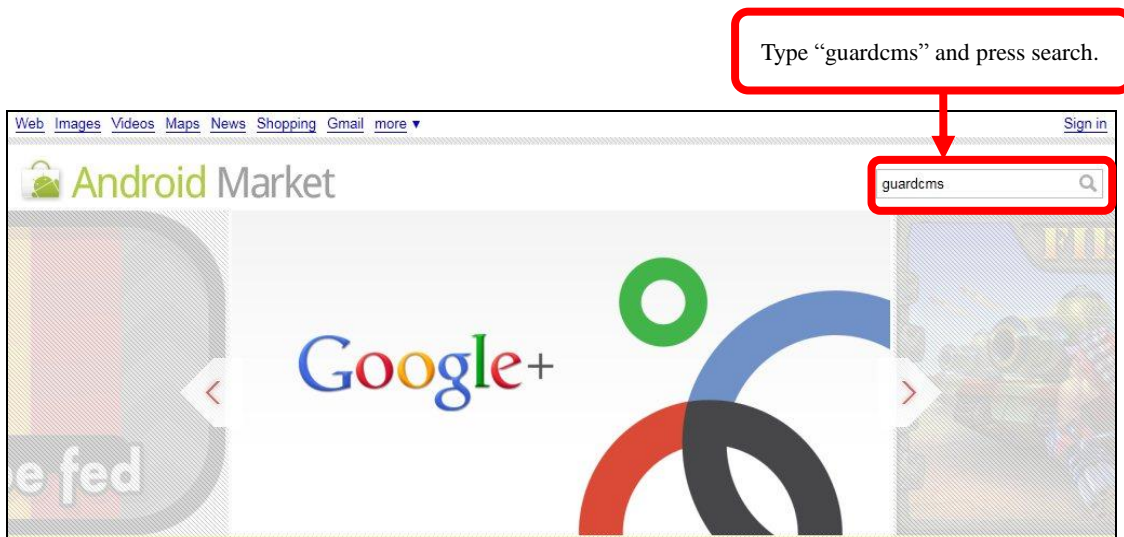
**Step 1:** In the web browser address, type the following link:

<https://market.android.com>

The “Android Market” page will be shown as below.



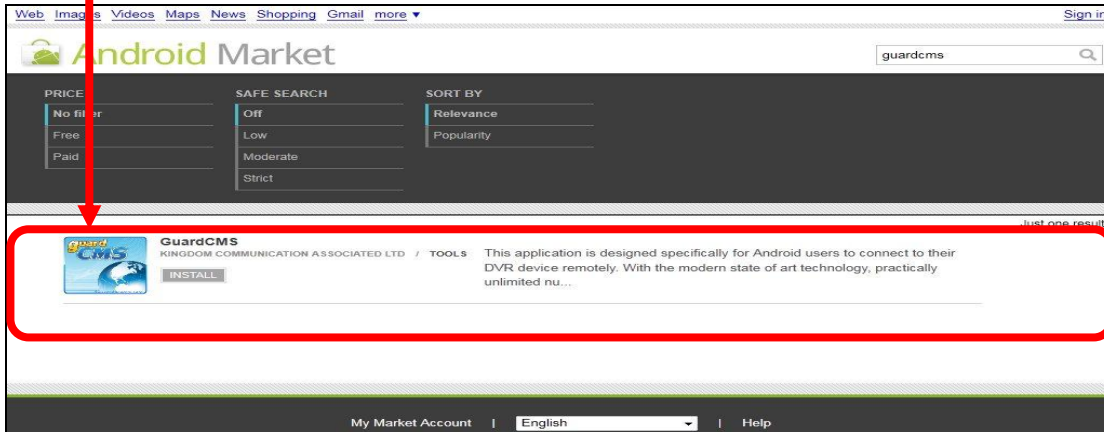
**Step 2:** In the top right hand search area, type “guardcms” and press search icon  to find our application.



**Step 3:** The search result will show our “GuardCMS” application.

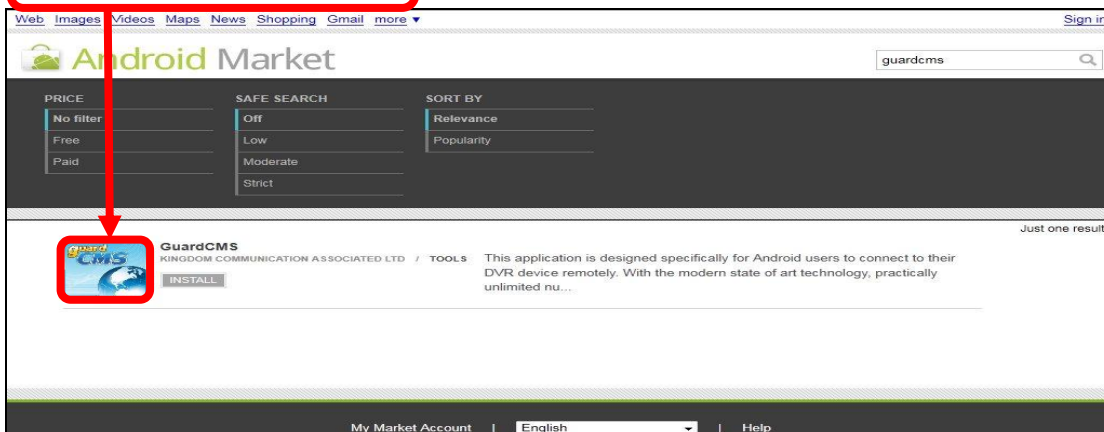
*Note:* To install the application, please check that your mobile device is connected to the computer.

Our “guardcms” application.

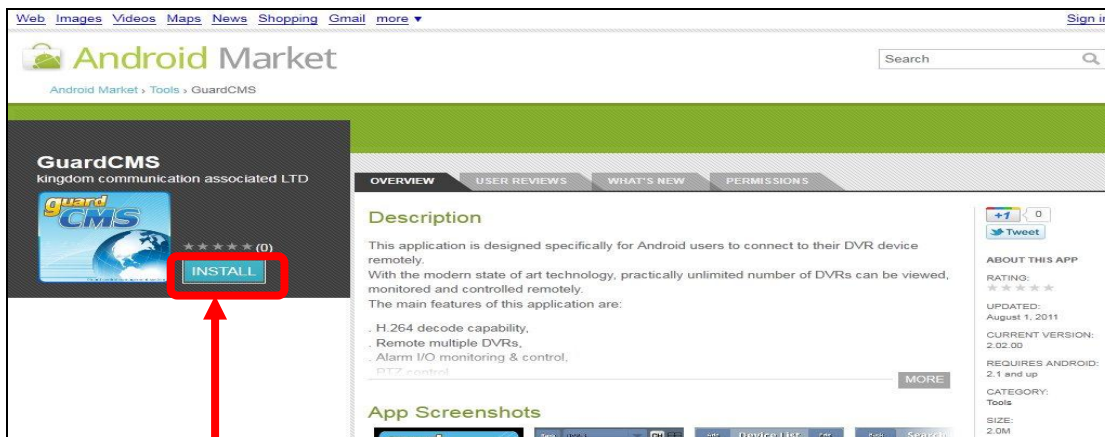


**Step 4:** (i) Click on the “GuardCMS” photo to view the application overview.  
(ii) After reading the overview, user’s can press “Install” to start the installation process.

Click here to view app. overview..

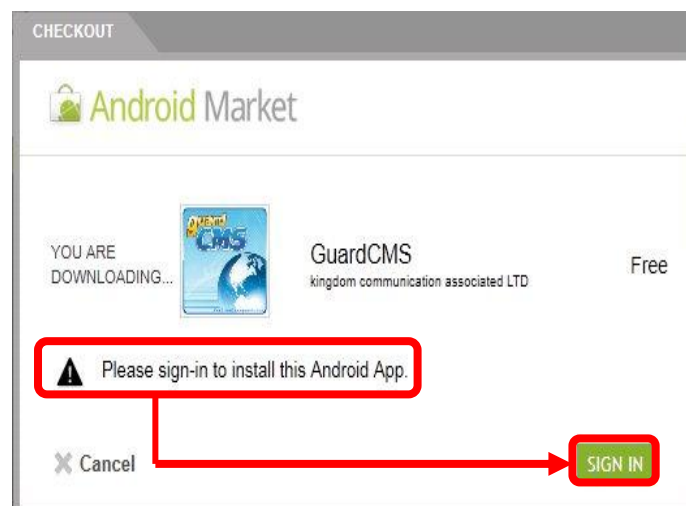


**GuardCMS Application Overview:**



Click here to install app. to your mobile device...

**Step 5:** Users will need to sign in to their google account in order to install this application.



Please follow the steps and after successful installation, this app. will be shown on your mobile device.



